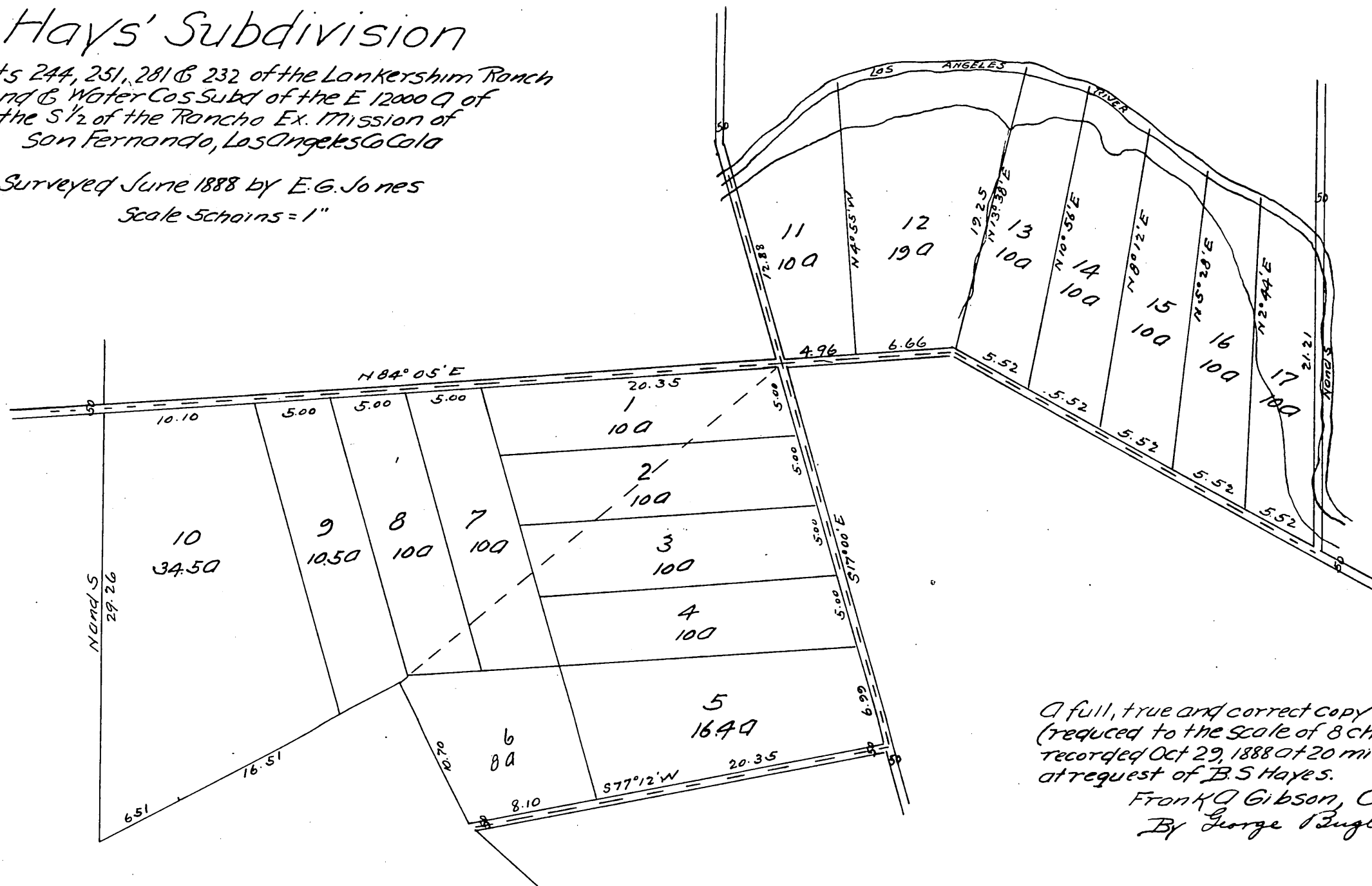


MAP
 OF
Hays' Subdivision
 of Lots 244, 251, 281 & 232 of the Lankershim Ranch
 Land & Water Cos Subd of the E 12000 Q of
 the S 1/2 of the Rancho Ex. Mission of
 San Fernando, Los Angeles Co Cal
 Surveyed June 1888 by E. G. Jones
 Scale 5 chains = 1"



A full, true and correct copy of the original
 (reduced to the scale of 8 chains to 1 inch)
 recorded Oct 29, 1888 at 20 min Past 2 P.M.
 at request of B.S. Hayes.

Frank Q. Gibson, County Recorder
 By George Ingber Deputy.

