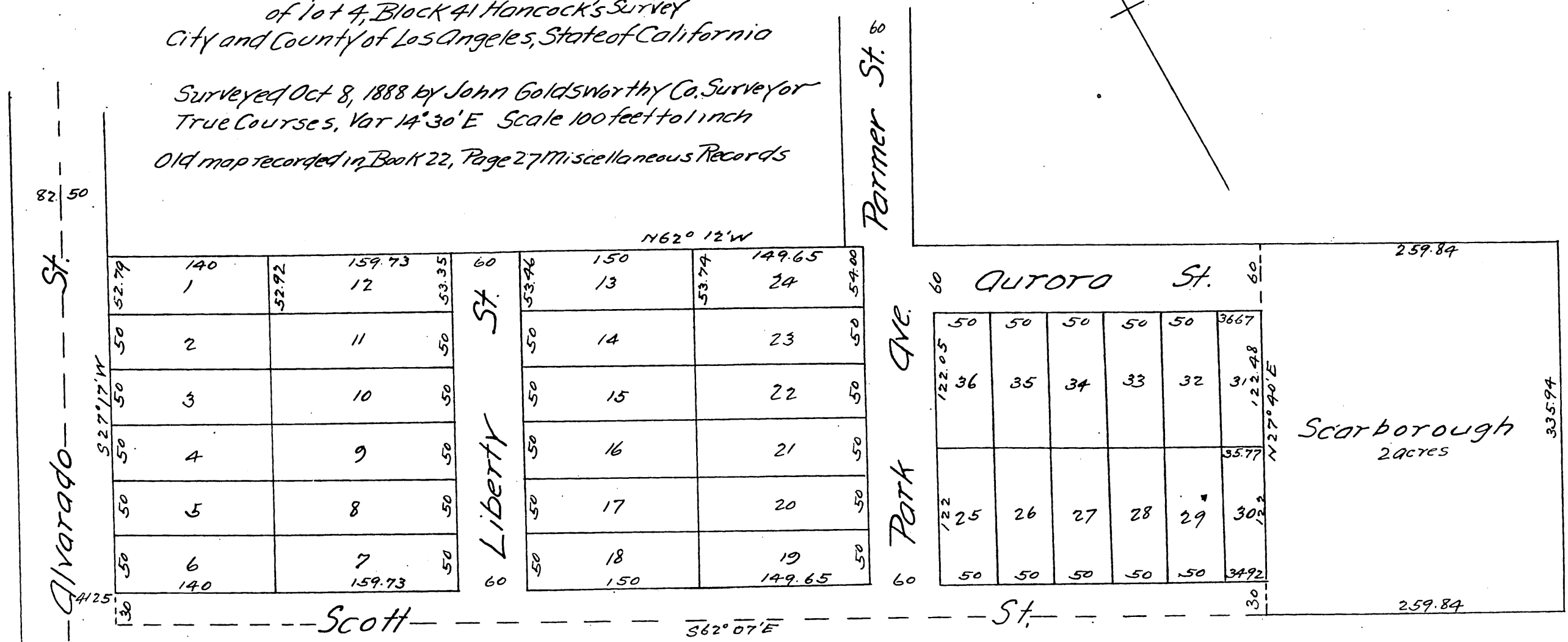
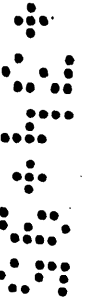
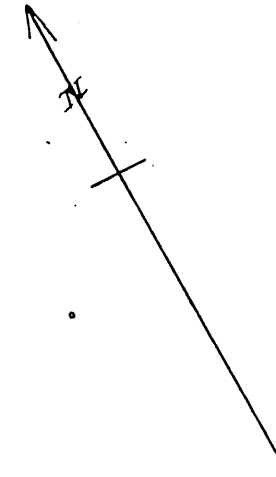


MAP of the Aurora Tract

Millard, Robinson and Damons Resubdivision of
the Westerly eight acres of the Southerly ten acres
of lot 4, Block 41 Hancock's Survey
City and County of Los Angeles, State of California

Surveyed Oct 8, 1888 by John Goldsworthy Co. Surveyor
True Courses, Var 14°30'E Scale 100 feet to 1 inch
Old map recorded in Book 22, Page 27 Miscellaneous Records



52.79	140	52.92	159.73	60	53.46	150	53.74	149.65	59.00
50	1		12	60	50	13		24	50
50	2		11	60	50	14		23	50
50	3		10	60	50	15		22	50
50	4		9	60	50	16		21	50
50	5		8	60	50	17		20	50
50	6		7	60	50	18		19	50
140		159.73		60	150		149.65		50

50	50	50	50	50	3667
36	35	34	33	32	31
25	26	27	28	29	30
50	50	50	50	50	3492

Scarborough
2 acres

A full, true and correct copy of the original
recorded Oct 29, 1888 at 16 min past 4 P.M.
at request of A. O. Damon
Frank A. Gibson, County Recorder.
By George Bugbee Deputy.