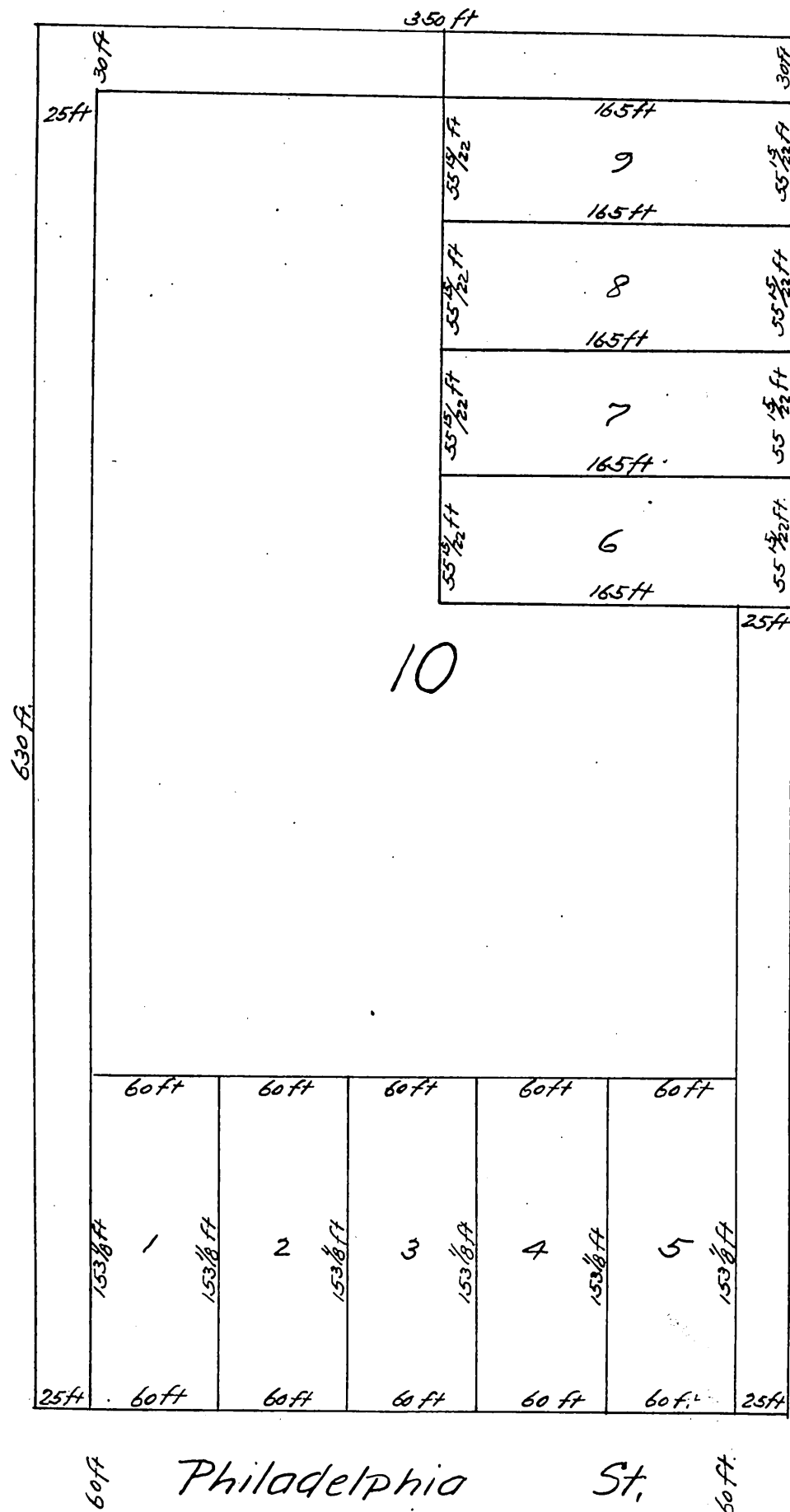


Witherow's Addition to Whittier
 Being a subdivision of Lot 10, Block F, of the
 Pickering Land and Water Company's Subdivision
 of the John M. Thomas Ranch, Los Angeles County
 California.



A full, true and correct copy of the original
 recorded Nov 2, 1888 at 25 min past 10 o'clock
 at request of E. B. Witherow.

Frank O. Gibson County Recorder
 By George Bugbee Deputy.