

MAP

OF

CARTER'S VINEYARD TRACT,

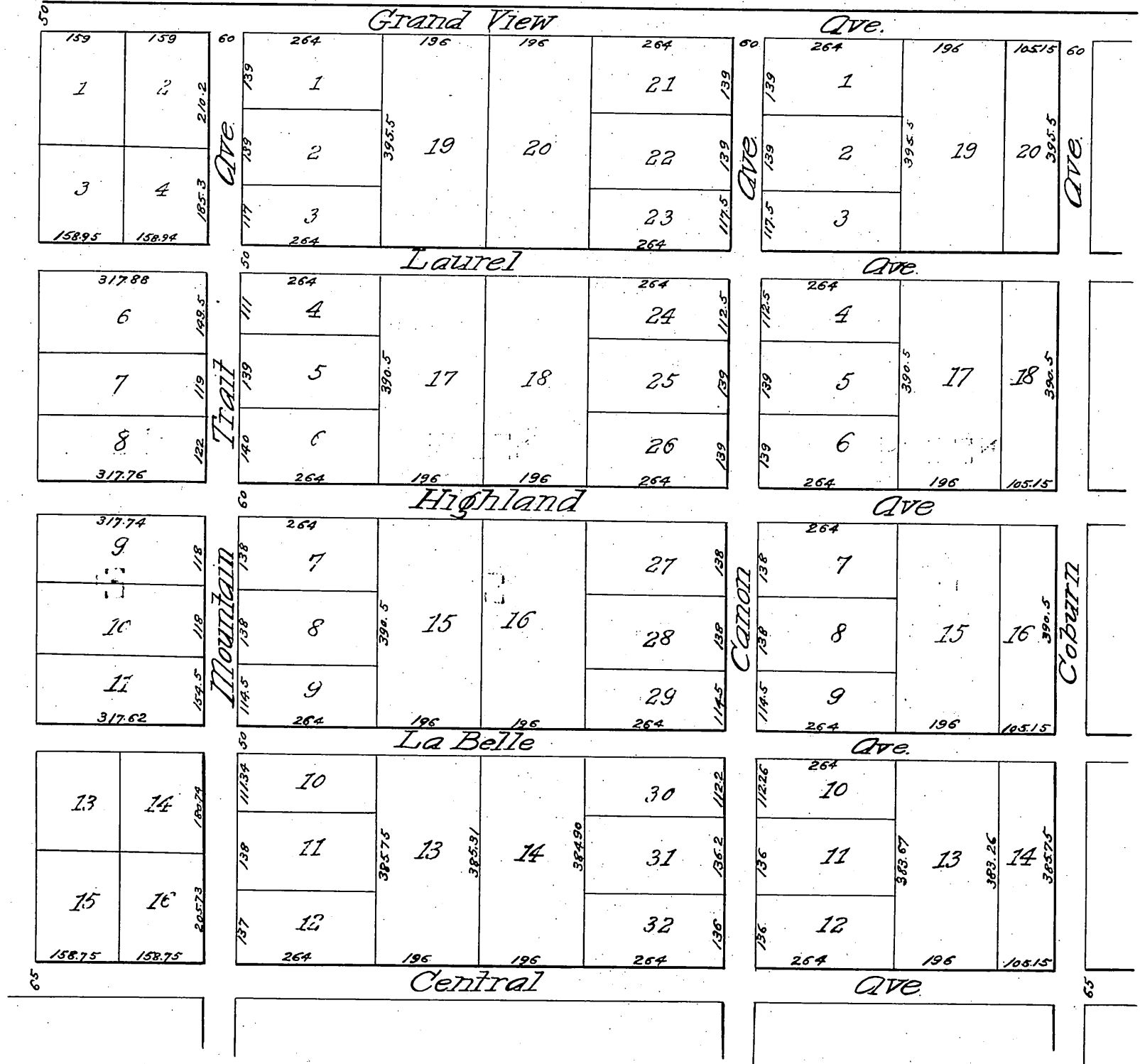
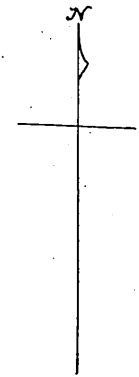
A Subdivision of Lots 11, 12 & the
East portion of 13,

SIERRA MADRE TRACT,
Sierra Madre, Los Angeles Co., Cal.

July 1, 1887

J. A. Osgood, Surveyor.

Scale 200 feet 1 inch.



(Reduced to the scale of 250 feet to an inch)
Recorded Nov. 13th 1888 at request of M.C. Carter.

For vacation of part Highland Ave. see 84-30
 " " La Belle and Coburn Aves. see 78-53
 " " " 53-85
 " " " 52-95