



# MAP

of the

## HOTEL TRACT

situate in the

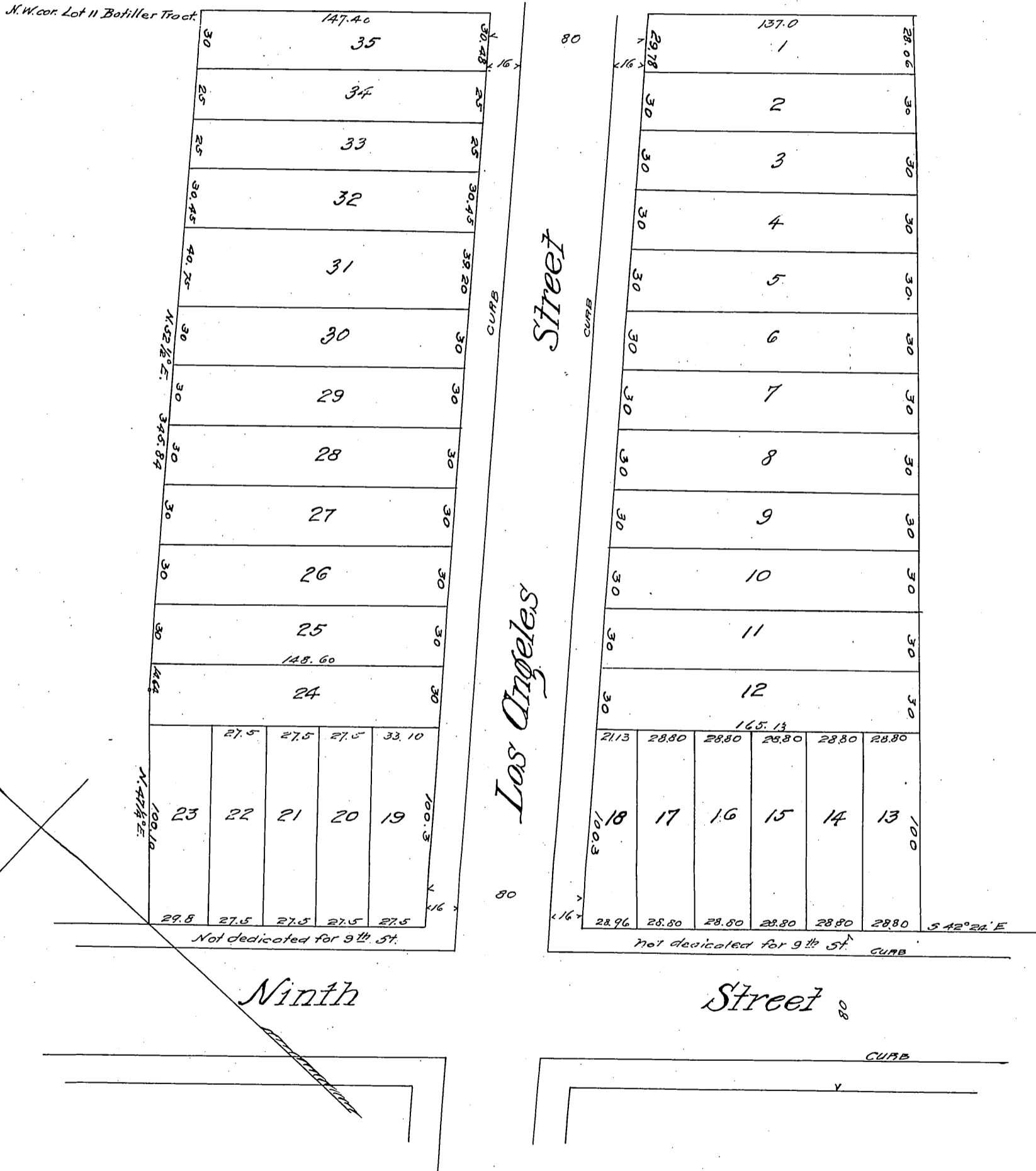
City of Los Angeles, Cal.

Being a subdivision of Lots 11, 12 & 13 of the

Botiller Tract

Surveyed Nov. 5<sup>th</sup> & 7<sup>th</sup> 1888 by J.H. Dockweiler

Scale 50 feet to 1 inch.



Reduced to the scale of 60 ft. to an inch.

Recorded Nov. 13, 1888 at request of A. Jacoby.

widening Los Angeles St II: 16-168 D: 4965-289 C.F. 541.  
For Alley on west side tr. See C.F. 638.

*Conf. J.M.M.*