



# Riggins Bros. Subdivision

OF THE

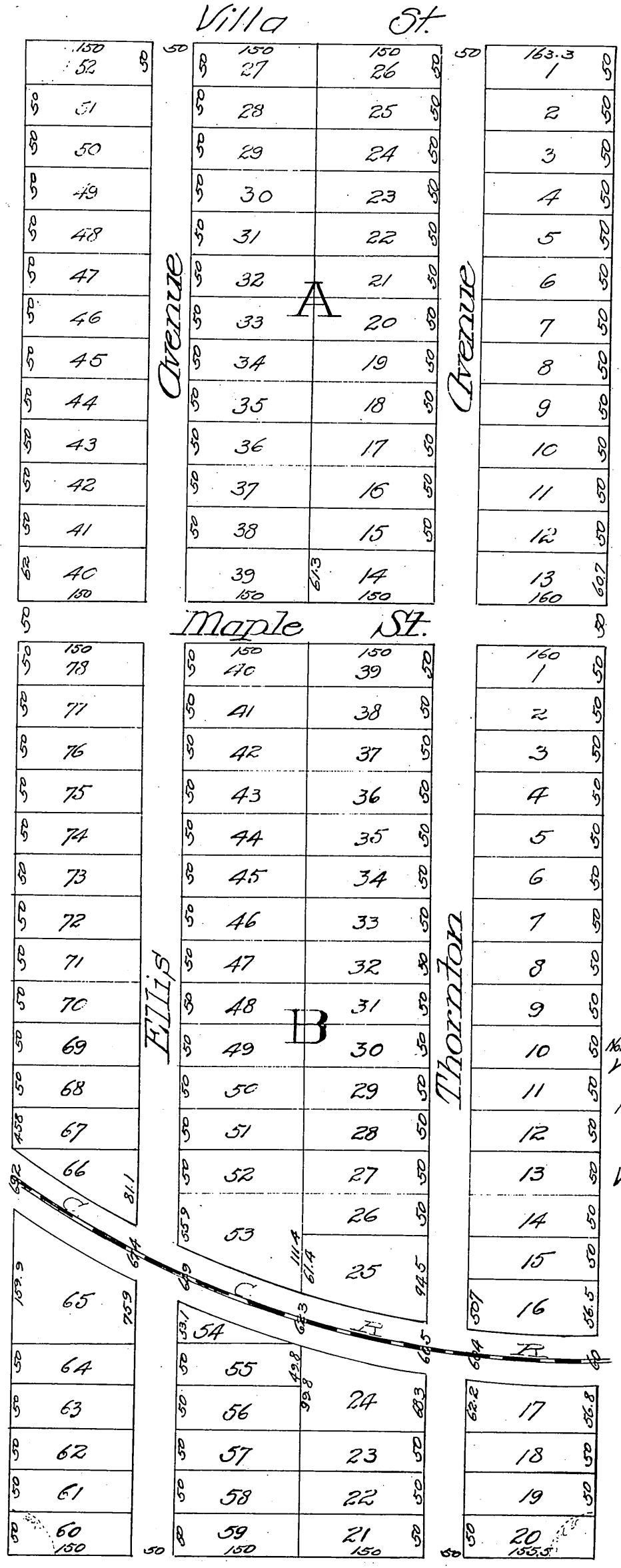
28.92 acres conveyed by Alexander B. Grogan to Geo. B. Meharry, being part of the Grogan Tract as recorded in Book of Deeds No. 104, page 581, Los Angeles Co. Records.

Surveyed Oct. 1887 by H. E. Mount C. E.  
Scale 100 feet to 1 inch.

Por. lots 21, 59 & 60 for Walnut St. D: 44-3 O.R. 4832-13

P.W. Carey Pasadena.

Thornston Ave. changed to North Chester Ave. by the Board of Supervisors Oct. 27 1902



Por. Lots 18 & 19 to City of Pasadena D: 36-58 O.R. 1990-298  
 Lot 58 Blk. B for Walnut St. D: 36-245 O.R. 2725-286  
 Por. lot 62 Blk. B for Walnut St. D: 36-245 O.R. 2569-371  
 Lot 22 Blk. B " " " " D: 36-250 O.R. 2725-300  
 Por. lot 23 Blk. B " " " " D: 36-269 O.R. 2643-355  
 Lot 61 Blk. B " " " " D: 36-280 O.R. 2863-108  
 Por. lots 19-20 Blk. B for " " " " D: 38-115 O.R. 2989-225  
 Por. " " " " " " " " D: 41-58 O.R. 3106-388

North 15' of lots 27 & 52 Blk. A D: 2673-307-110-6  
 Widening Maple St D: 3857-298 D: 8-122  
 For parking por lots 18 & 19 Blk. B D: 15-135  
 " " " " " " " " D: 15-135  
 " " " " " " " " D: 15-136  
 Vac. por. of Villa St. Ord. 1599 D: 25-3

(Reduced to the scale of 150 to one inch)  
 Recorded Nov. 19, 1888 at  
 the request of J. R. Riggins.

Chas