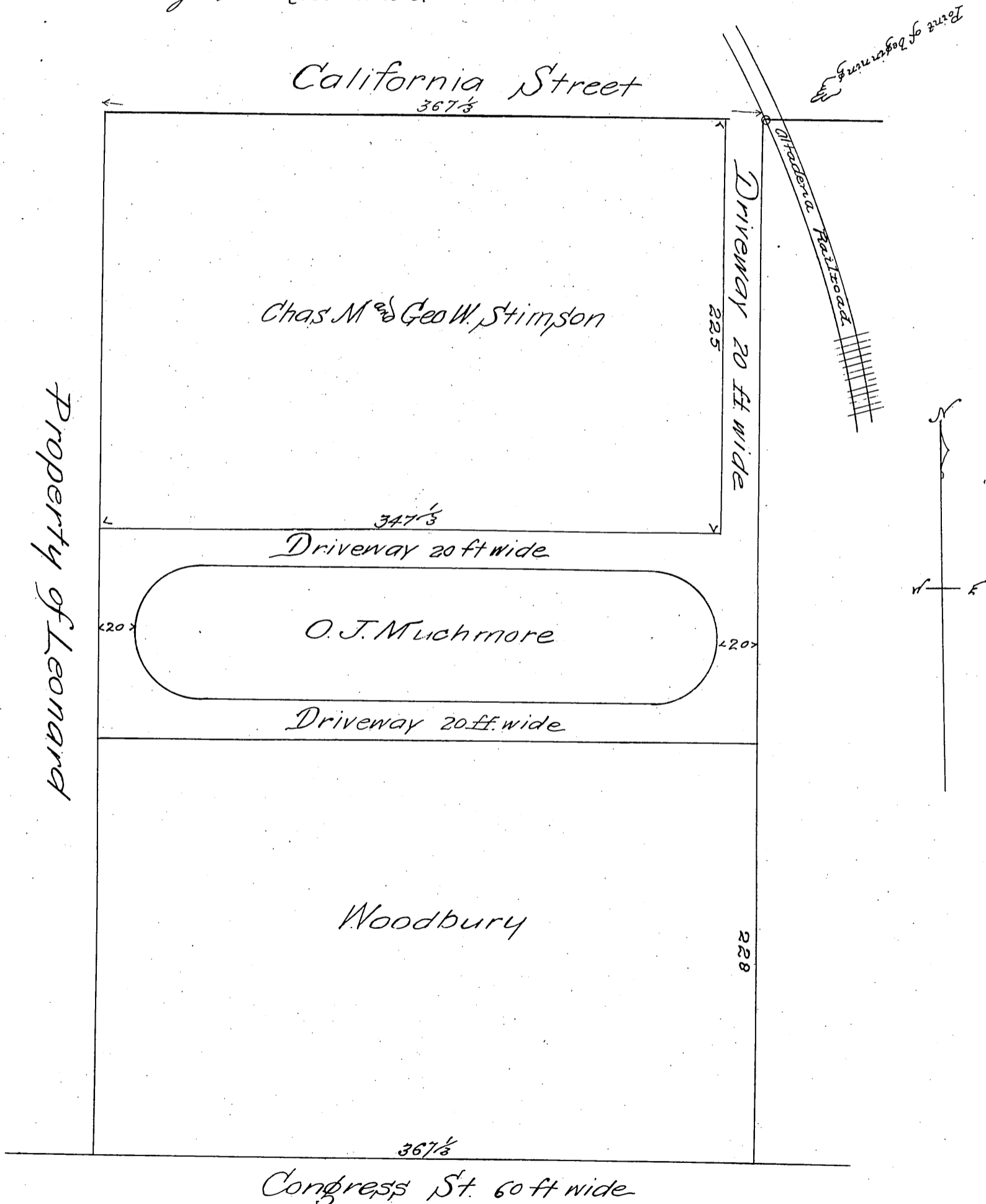


Subdivision
 of tract of land situated in the
 City of Pasadena
 Los Angeles County State of California

bounded as follows:

Commencing at a point on the South side of California Street, West from Fair Oaks Avenue, 440 1/2 feet and thence running West along the South line of said California Street 367 1/2 feet to a point, thence South 563 feet more or less parallel with Fair Oaks Avenue to a point on the North line of Congress Street, thence East, along the North line of said Congress Street parallel with California Street, 367 1/2 feet to a point, thence North parallel with Fair Oaks Avenue to point of beginning. The same being situated in the Rancho San Pascaul, in Division F of the subdivided lands of the San Gabriel Orange Grove Association.



Recorded Nov. 23, 1888.
 At request of O. J. Muchmore.

Vacation of driveways Ords. 301-319 D. 8-86.

*Amplified
 12/1/88*