

# MAP

showing the property of

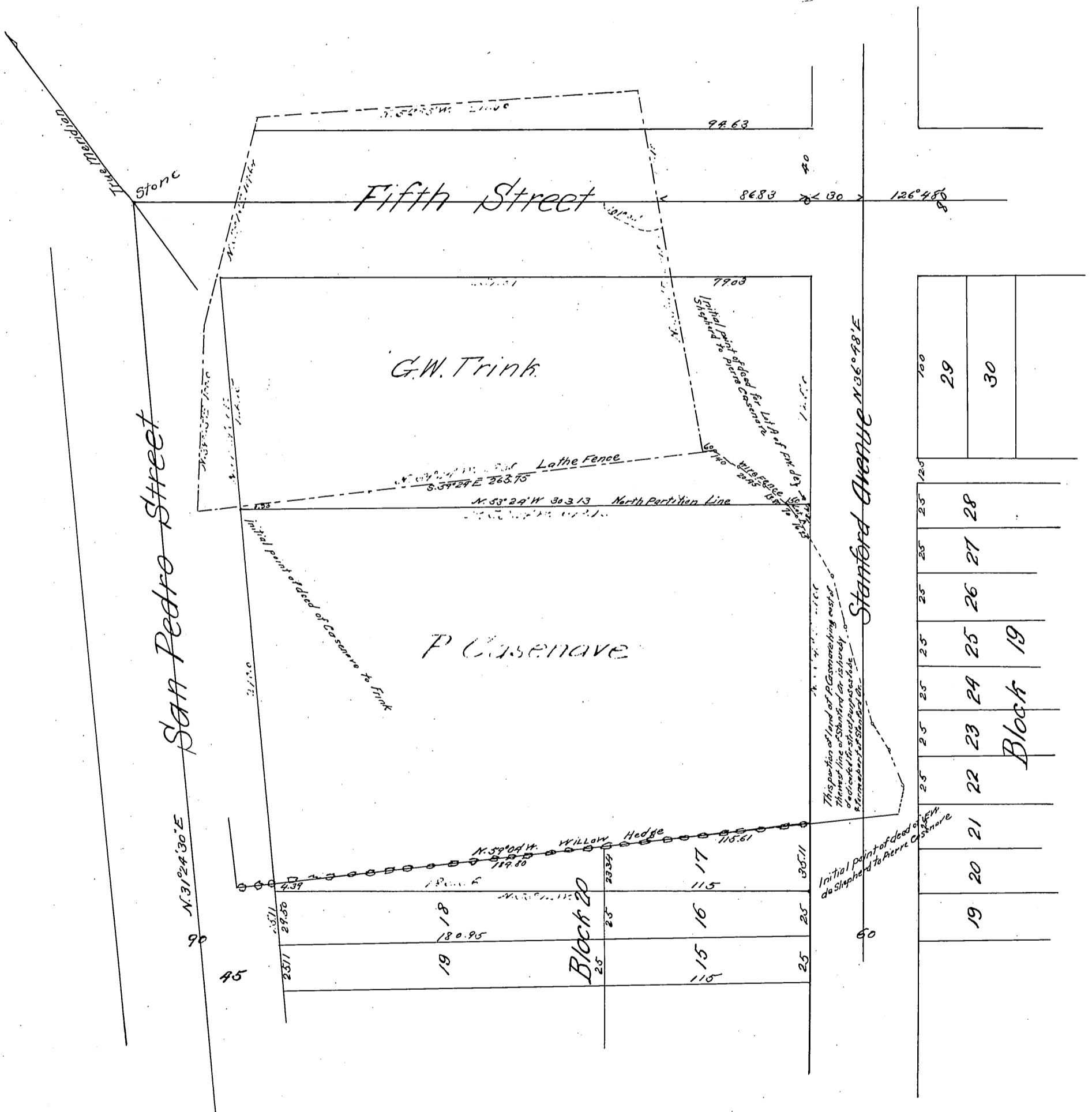
## P. CASENAVE

Situate on the East side of San Pedro Street  
Between Fifth & Sixth Streets.

Los Angeles, Cal.

Surveyed August 1888 by J.H. Dockweiler.

Scale 30 feet to one inch.



Original reduced to scale of 60 feet to one inch.  
Recorded at request of P. Casenave Dec 4 1888.

*Amesbury*  
1888