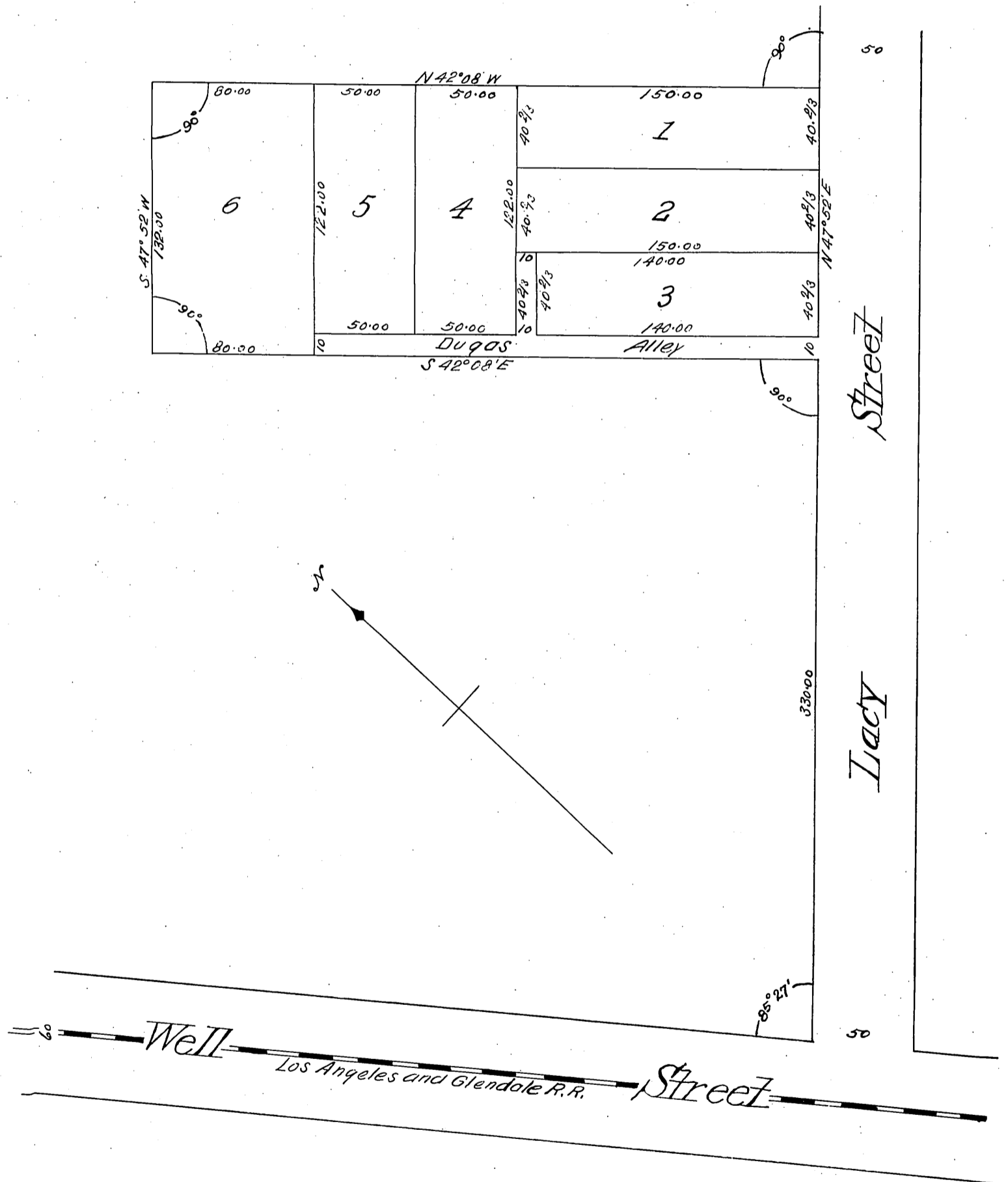


MAP
OF
McCullum's Subdivision

of Lot No 16 of a tract of land situated in
Griffins Addition to East Los Angeles.

Surveyed Dec 8, 1888 John Goldsworthy Co Surveyor by G.M.D Fisher Deputy.

True Courses Var 14°E Scale 50 feet to 1 inch



(Reduced to the Scale of 1" = 60')
Recorded Dec 14, 1888 at 10:28 AM
at request of J.C. McCullum.

*Confined
G.M.D.*