

MAP

OF

C. C. Hunt's Subdivision

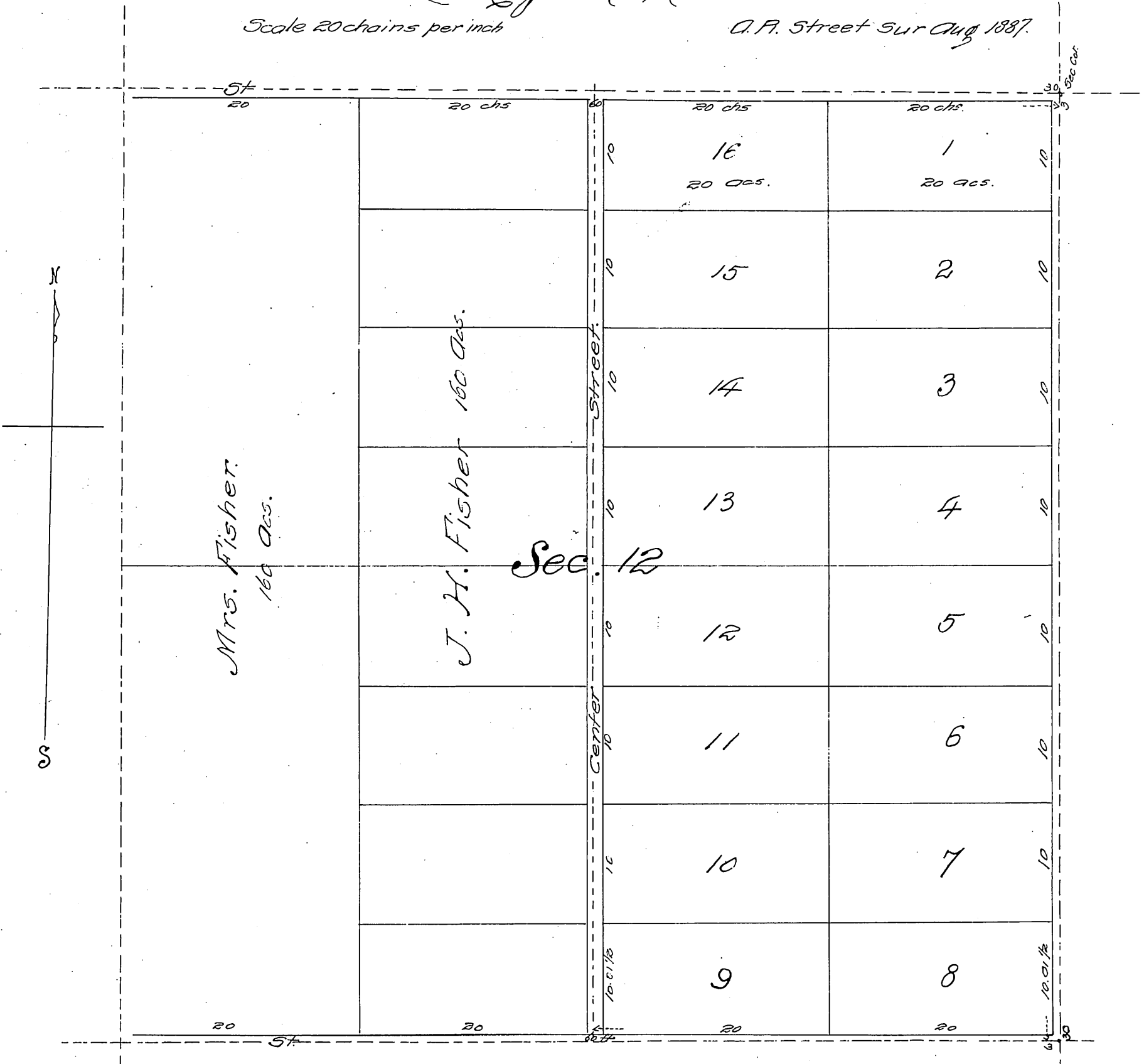
in Sec 12, T. 3. S. R. 15 H. S. B. M.
of the

SAUSAL REDONDO RANCHO

Los Angeles Co., Cal.

Scale 20 chains per inch

C. F. Street Sur Aug 1887.



I, C. C. Hunt of Santa Barbara County, State of California, hereby certify that the annexed plat or map shows the subdivisions of the East half of Sec. 12 T. 3. S. R. 15 H. S. B. M. in the County of Los Angeles State of California as surveyed and platted by C. F. Street Surveyor in August 1887.

Deed for St on north D: 10-189 D: 3641-287

Recorded Dec 15, 1888.
at request of C. C. Hunt.

C. C. H.