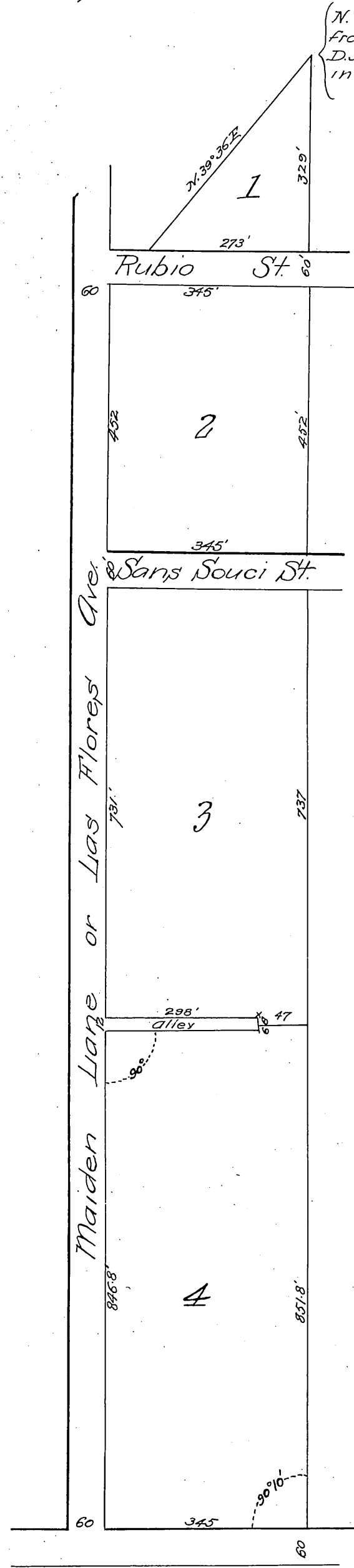


First Addition
TO
Altadena Heights

(N.E. corner of 20 acre tract deeded from B.F. Butler to J.B. Young & D.J. Macpherson by deed recorded in Book of Deeds 212, Page 612.



Note 1,
Rubio & Sans Souci Streets are a continuation of Rubio and San Souci Streets of the "Ocean View Tract" as per map recorded in book 17 page 69 Miscellaneous Records.

Note 2,
In offering Rubio and Sans Souci Streets to the Public by filing this plat, the right is reserved to tunnel under them for water purposes.

Sans Souci-St changed to Prospect St D. 13

(Enlarged to the scale of 200 feet to one inch)
Recorded Dec. 20, 1888 at request of D. J. Macpherson.

*Carroll
Company
D.M.M.*