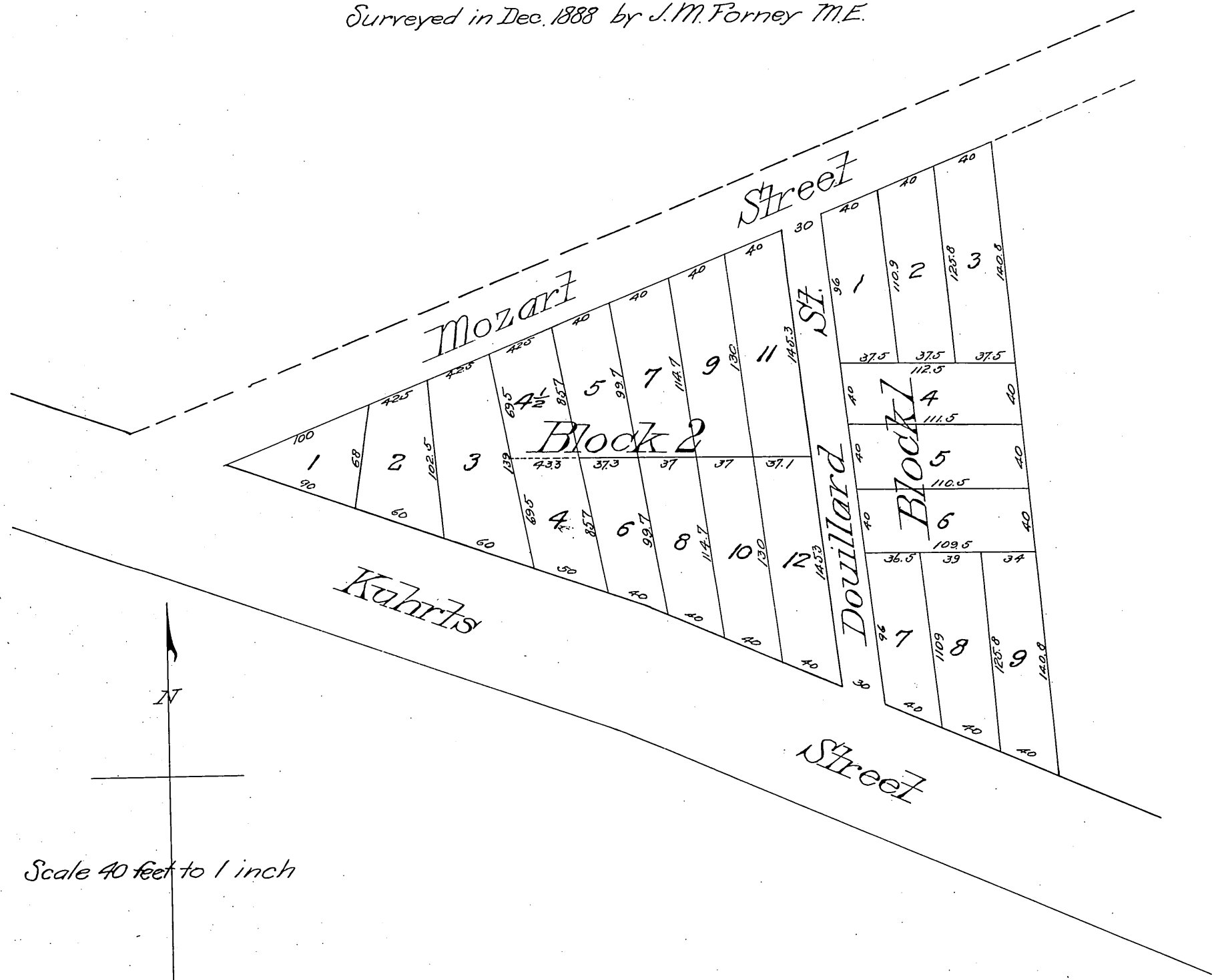


MAP
 — OF THE —
Douillard Tract.
 Being a subdivision into lots of part of the
Chavez Tract
 Situated in Los Angeles City, California.
 Owned by Francois Douillard.

Surreyed in Dec. 1888 by J.M. Forney M.E.



Scale 40 feet to 1 inch

(reduced to the scale of 80 feet to one inch)
 recorded Jan'y. 3, 1889
 at request of Francois Douillard.

*Conf'd
Chas. M.*