

PLAT

OF

Mrs. Bush's Subdivision

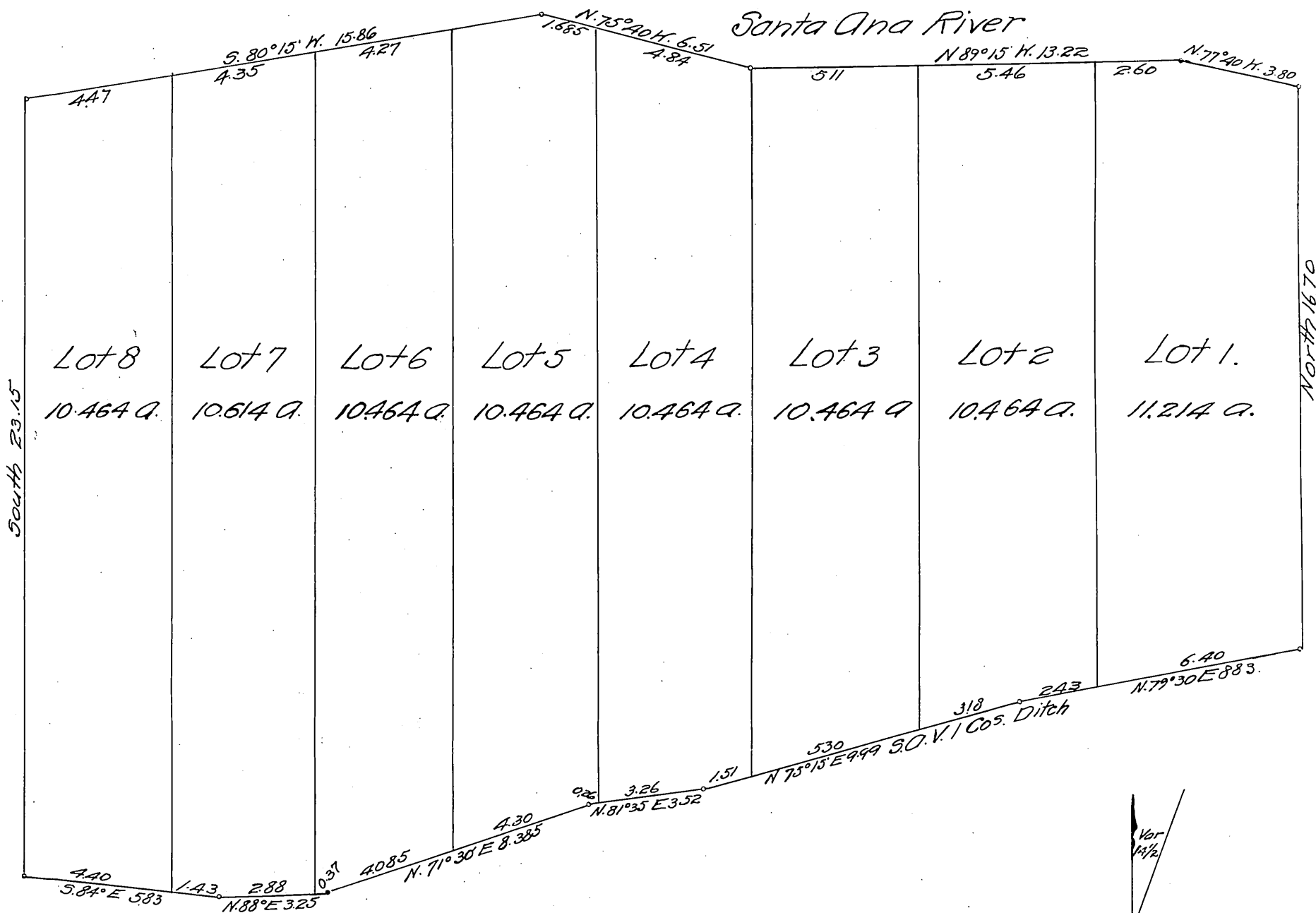
of a portion of the Bush Tract in the
Rancho Santiago de Santa Ana,
Los Angeles County, Cal.

Surveyed by William Bathgate Dec. 1888.

Scale one inch = two chains.

Description.

Commencing at a point where the centre line of the Santa Ana Valley Irrigation Co's Ditch intersects the West boundary of the "Heirs Dominguez Tract" thence North along said West boundary 16.70 ch. to the South bank of the Santa Ana River; thence N 77° 40' H. 3.80 ch. thence N 89° 15' H. 13.22 ch. thence N 75° 40' H. 6.51 ch. thence S 80° 15' H. 15.86 ch. thence South 23.15 ch. to the center of the S.A.V. I. Co's ditch, thence S 84° E 5.83 ch. thence N 88° E 3.25 ch. thence N 71° 30' E 8.385 ch. thence N 81° 35' E 3.52 ch. thence N 75° 15' E 9.99 ch. thence N 79° 30' E 8.83 ch. to point of beginning. Containing 84.612 acres.



(Reduced to the scale of 4 chs to one inch)
Recorded Jan'y 4, 1889
at request of Bank of Orange.