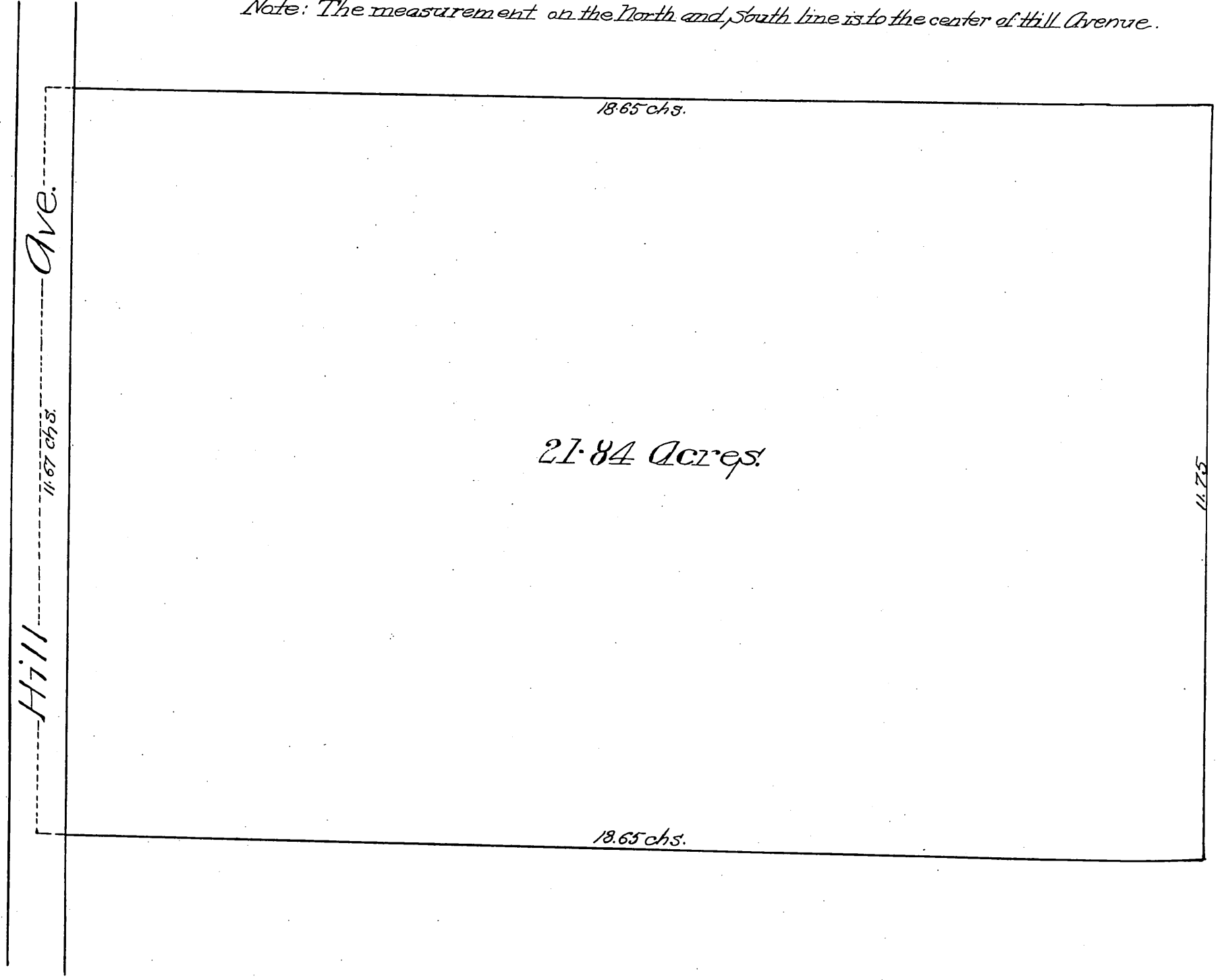




*A Replat*  
 OF  
*E. H. Royce's Subdivision*

as recorded in Book 30, Page 28 and in Book 28, Page 83 Miscellaneous Records of Los Angeles Co., Cal. Being the 21.84 acre tract deeded by A. B. Grogan to E. H. Royce Aug. 29<sup>th</sup> 1881 and recorded in Book of Deeds No 82, page 103 et seq of Los Angeles Co., Cal.  
 Scale 3 chains to 1 inch J. O. Marsh, Draughtsman.

Note: The measurement on the North and South line is to the center of Hill Avenue.



Recorded Jan'y 7, 1889 at request of E. H. Royce.

For opening Sierra Bonita Ave See C.F. Map 704.  
 " " Unnamed Street " " 706.

*Amby  
 O.M.*