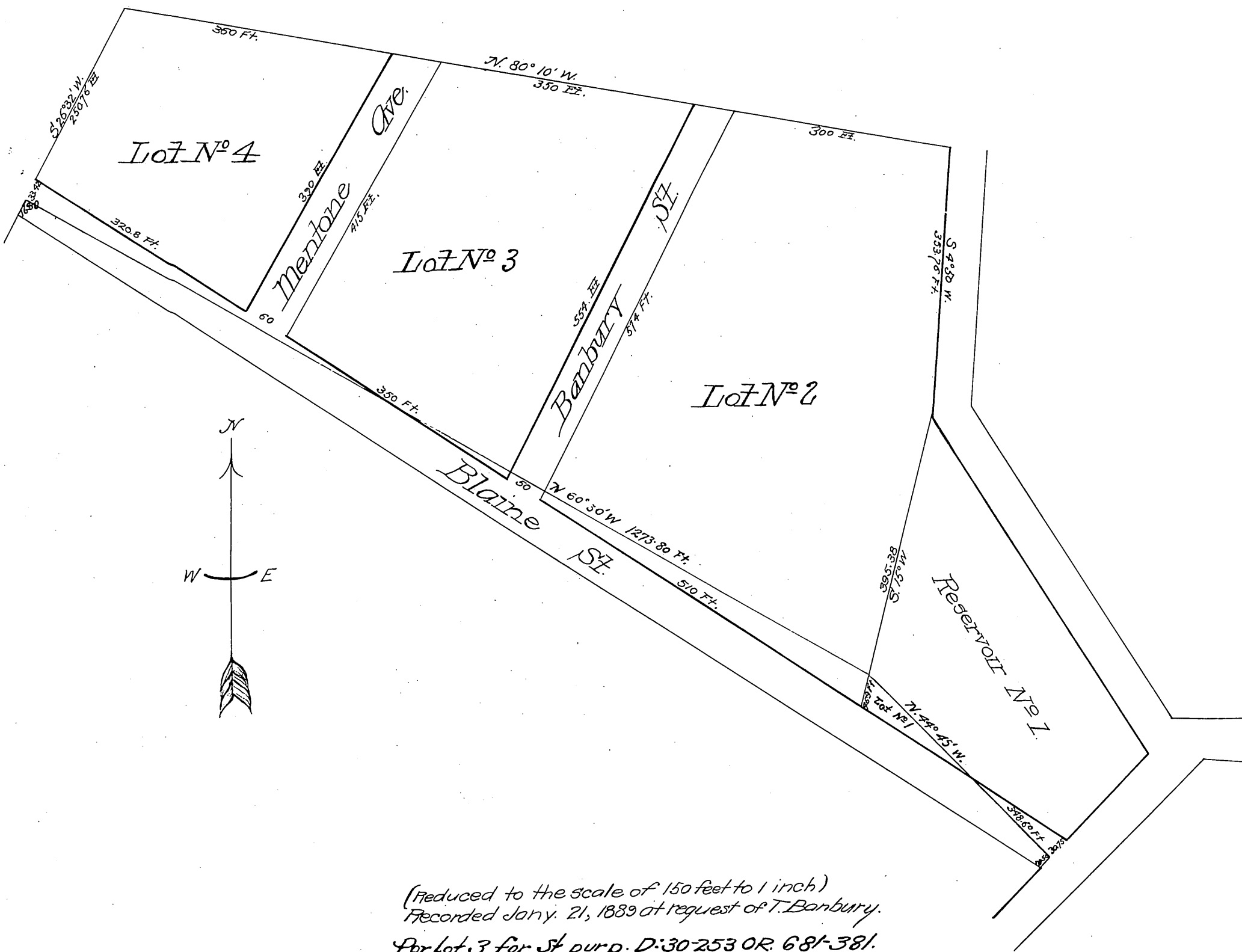


REPLAT
OF
T. Banbury's Subdivision

OF
Lot 3 Block A San Pascual Tract
Land of the L. V. Land W. Assn. as said Block A
is shown on a map recorded in Book 5
Miscel. Records Los Angeles Co. Cal.

Surveyed Dec. 8, 1888 By J. W. Sedwick.
Scale 100 ft. = 1 inch.



(Reduced to the scale of 150 feet to 1 inch)
Recorded Jan. 21, 1889 at request of T. Banbury.
For lot 3 for st purp. D:30-253 OR. 681-381.

Handwritten signature or initials in the bottom left corner.