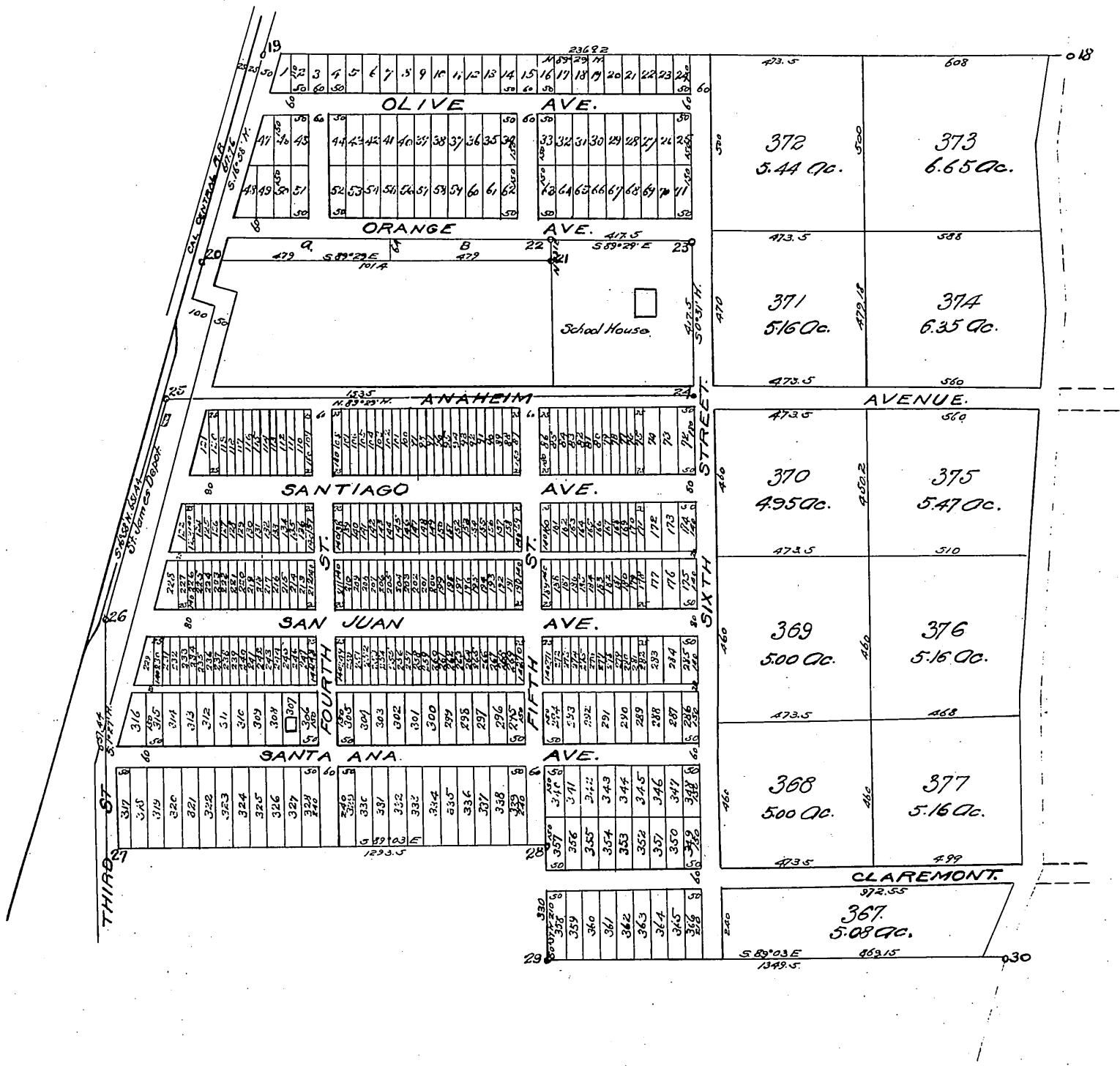




*MAP*  
 and Subdivision of  
*R.B. Taylor Tract*  
 Rancho Santiago de Santa Ana.  
 Los Angeles Co. Cal.

S. O. Wood C.E.  
 Scale 200 ft. = 1 inch.  
 1889.



*For description see Deeds 531, pages 90 etc. Recorded Jan 17, 1889.*

*Areas of all lots from 367 to 407 are calculated to the center of streets except on Canal Street and those to the center of Ditch. Distances the same.*

*The right is reserved over all streets to build and maintain Rail roads and operate the same by steam electricity or any other power Also along the boundary lines of any lots in this Tract, the right is reserved to make and maintain ditches lay pipes for the purpose of carrying water for any purpose whatever.*

C.M.P.