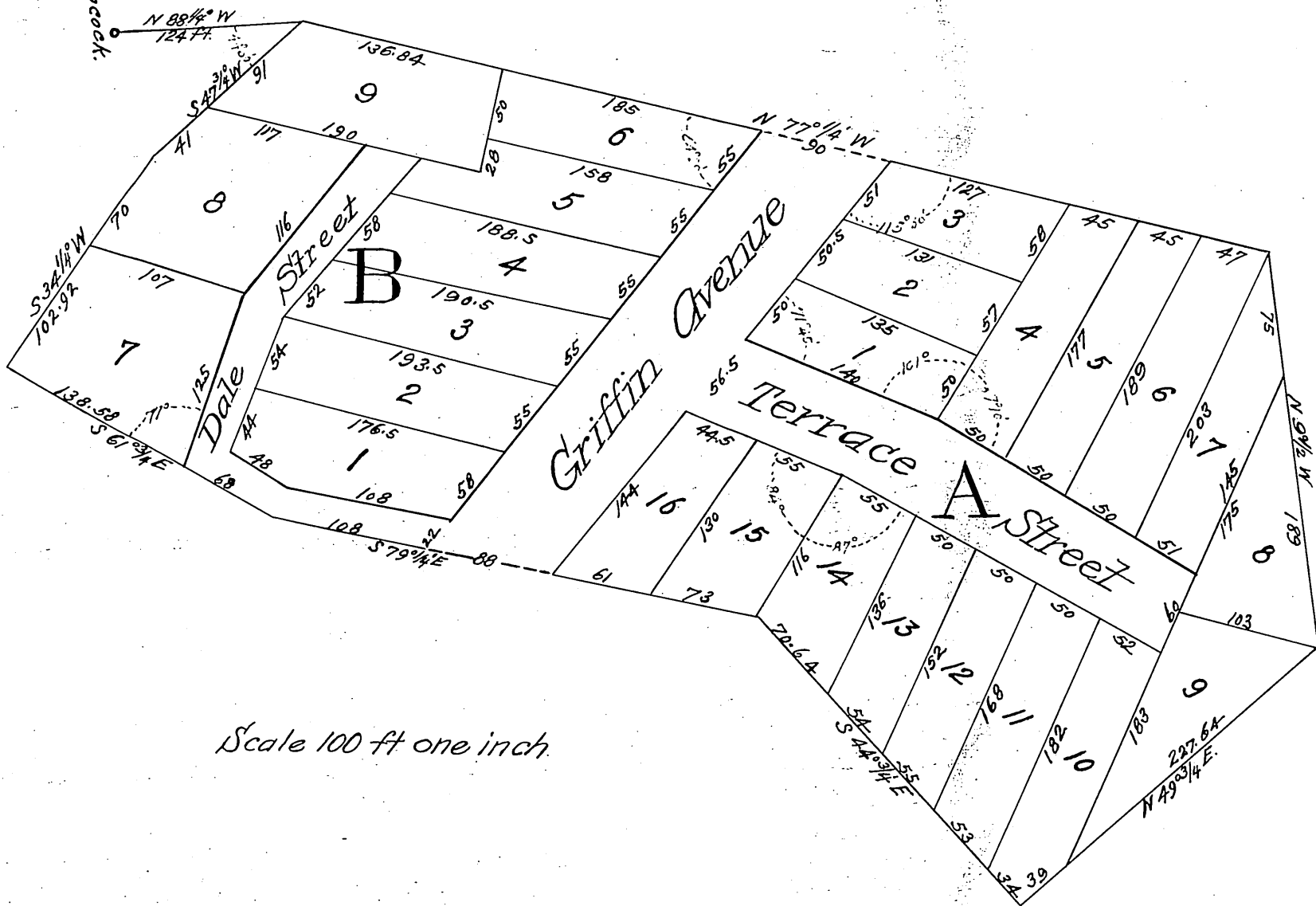


PLAT
 OF THE
 Terrace Villa Tract
 Los Angeles, Cal.

Surveyed by H Young Harding Jan 18th 1889.

Note: This plat is filed to take the place of plat appearing on Page 87 Book 26 of Miscel. Records and Page 71 of Book 19 Miscel. Records Los Angeles California.

Station No 2 of the Traverse of Los Angeles City as surveyed by Henry Hancock.



Scale 100 ft one inch.

Recorded Jan. 22, 1889 at 5 min past 4 P.M.
 at request of Thos. J. Moore.

Vacation of Dale St Ord 5955
 " " part of Griffin Ave Ord 18119
 " " Terrace St Ord. 13118