

MAP

— OF THE —

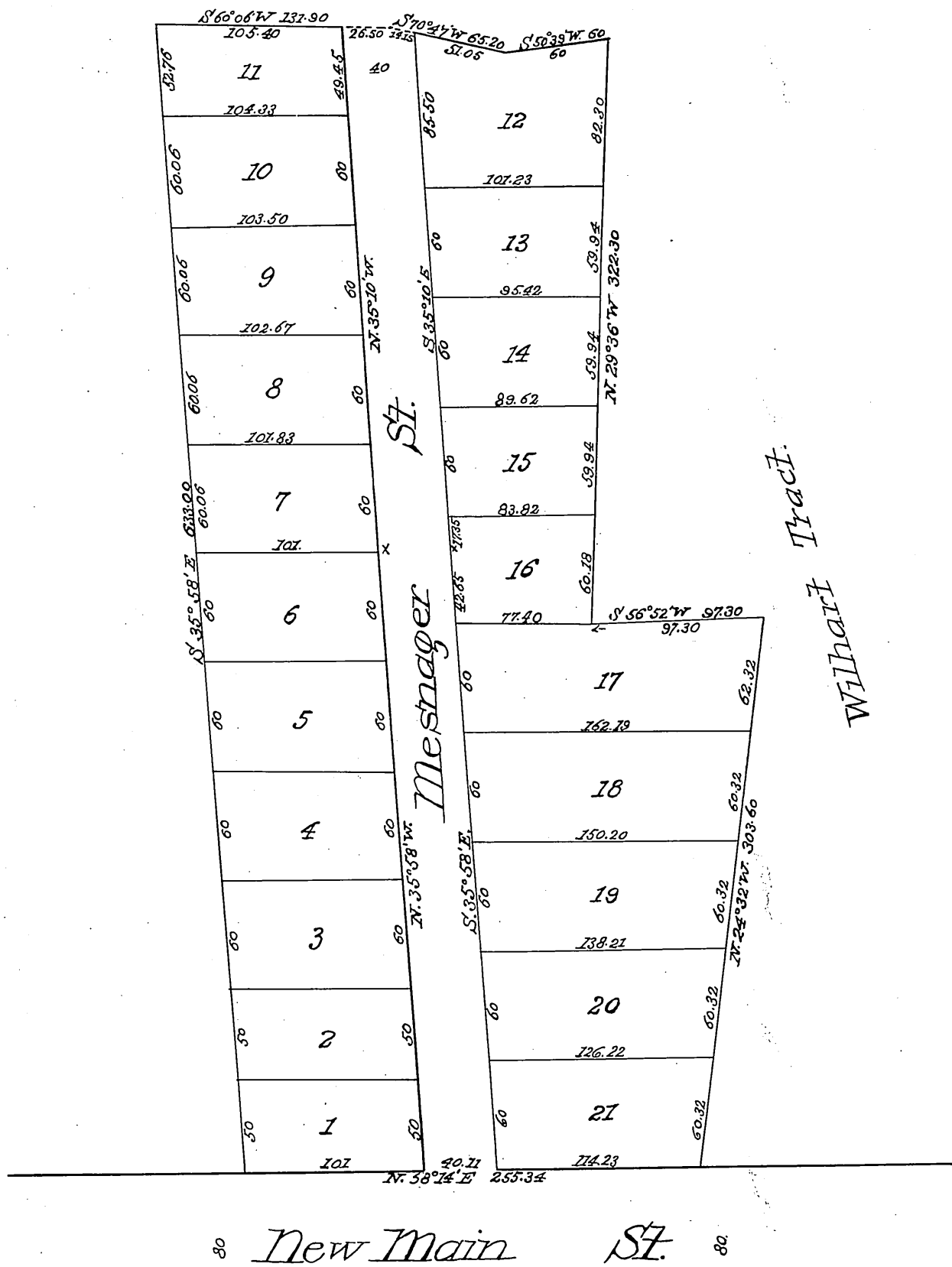
Mesnager Tract

Los Angeles City, Cal.

Surveyed January 1889. by Geo. E. Pillsbury C.E.

Scale 30 ft. to one inch.
(reduced to the scale of 80 feet to one inch.)

Note: The Mesnager Tract is a re-subdivision of all those certain pieces or parcels of land described in the following deeds to wit: Charles M Hayden to George Le Mesnager Oct 16th 1876 Book of Deeds N^o 45, Page 581 et seq. Louise Naud and Manuela Ybarra to George Le Mesnager Feby 7th 1883. Book of Deeds N^o 102 Page 37 and Soledad Peratta de Wilhart et al. to George Le Mesnager June 4th 1885 Book of Deeds N^o 139, Page 421 all of Records of Los Angeles Co Cal.



Recorded January 24, 1889 at 5 min past 4 P.M. at request of G. Le Mesnager.

Geo. E. Pillsbury