

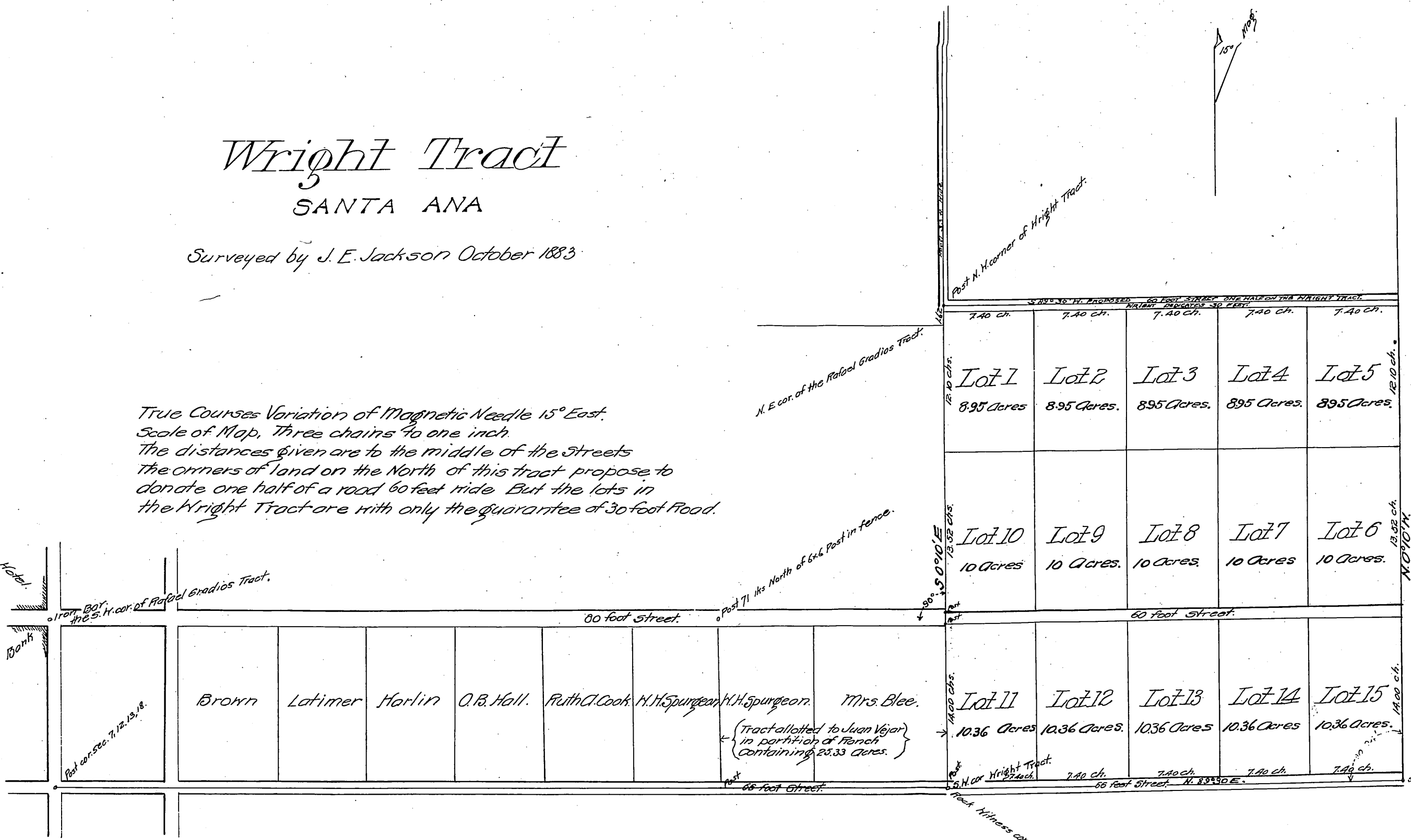
Wright Tract

SANTA ANA

Surveyed by J. E. Jackson October 1883

True Courses Variation of Magnetic Needle 15° East.
 Scale of Map, Three chains to one inch.
 The distances given are to the middle of the streets
 The owners of land on the North of this tract propose to
 donate one half of a road 60 feet wide But the lots in
 the Wright Tract are with only the guarantee of 30 foot Road.

Layman's Hotel.
 Commercial Bank



(Reduced to the scale of 8 chs to one inch)
 Recorded Jan 25, 1889.
 at request of W. S. Bartlett.

