

3673

MAP

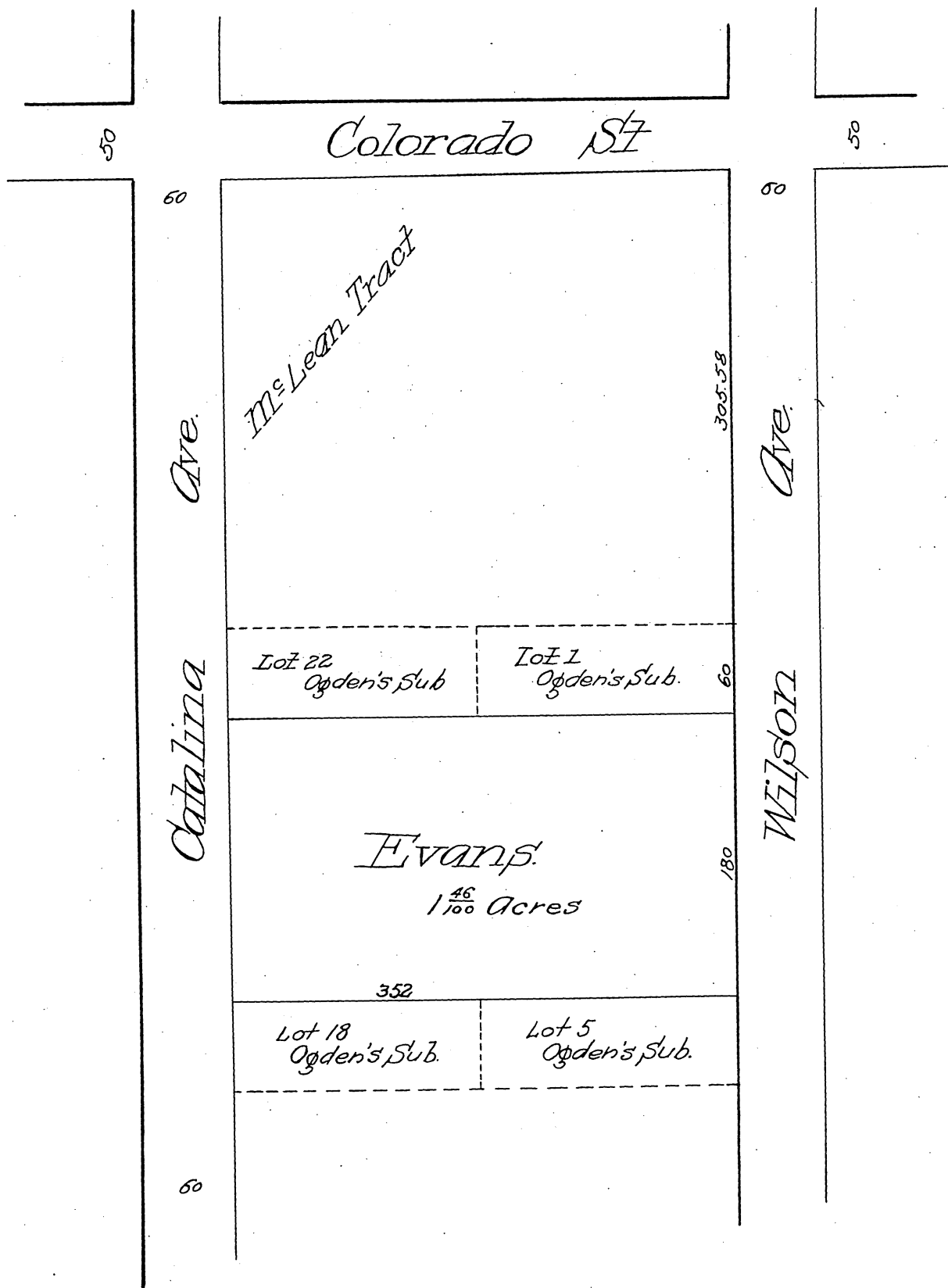
OF

Evans' Replat

of Lots 2, 3, 4, 19, 20 and 21 of H. W. Ogden's
Subdivision of Lot 3, Block "L" of the Lake
Vineyard Land and Water Ass'n.

Pasadena

Scale = 80 ft. to 1 inch.



(Reduced to the scale of 100 feet to one inch)
Recorded Jan. 30, 1889 at request of Wm R. St...

For. to City of Pasadena D: 36-46 O.R. 2112-36
Por. For Green St. D: 38-153 O.R. 2980-180
Por. " " " D: 41-102 O.R. 2990-153

Comptroller