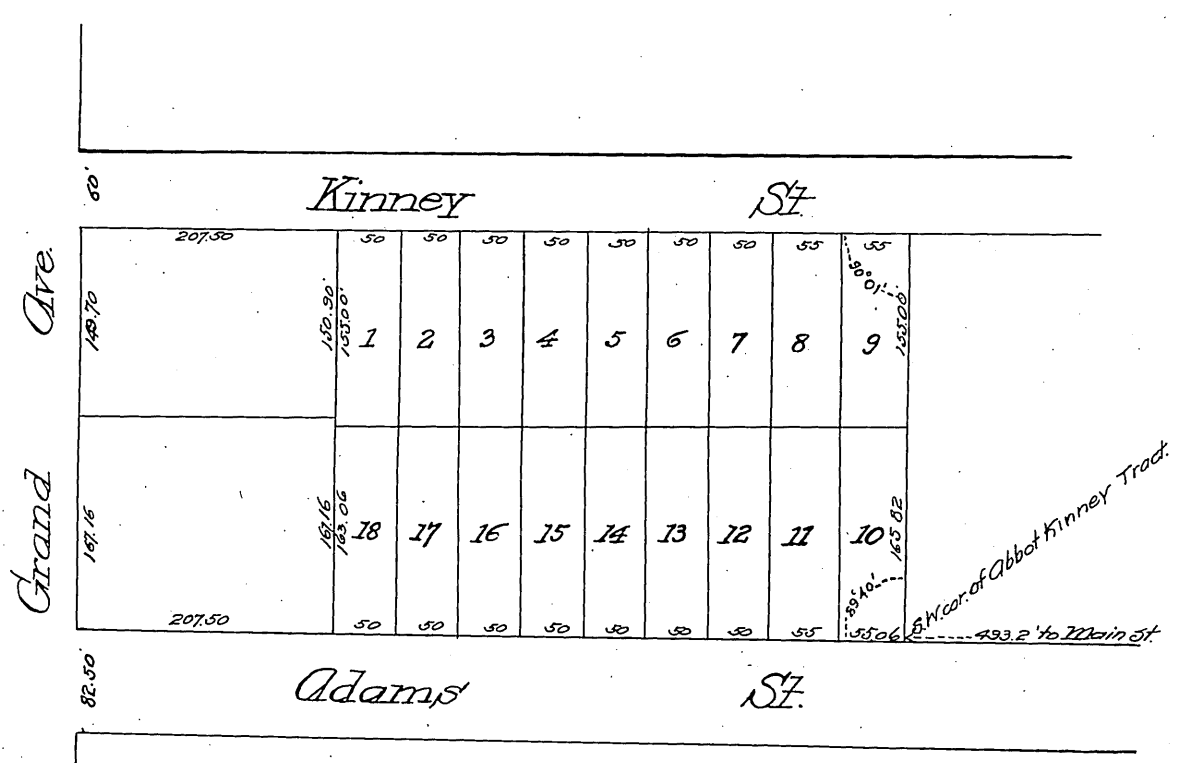


MAP
 OF THE
Whiting Tract
 in the City of Los Angeles California

Scale 60 ft to one inch



Note: Whiting Tract is contained in area colored blue.

For Lots 5, 6, 7, 12, 13, & 14 for Hill St. D: 35-108 Doc. BK. 539-352
Hill St. name estab. Ord. 45376

(Reduced to the scale of 150 feet to one inch)
Recorded Jan. 31, 1889 at
request of Q. & T. I. Co.

Conf. OMM.