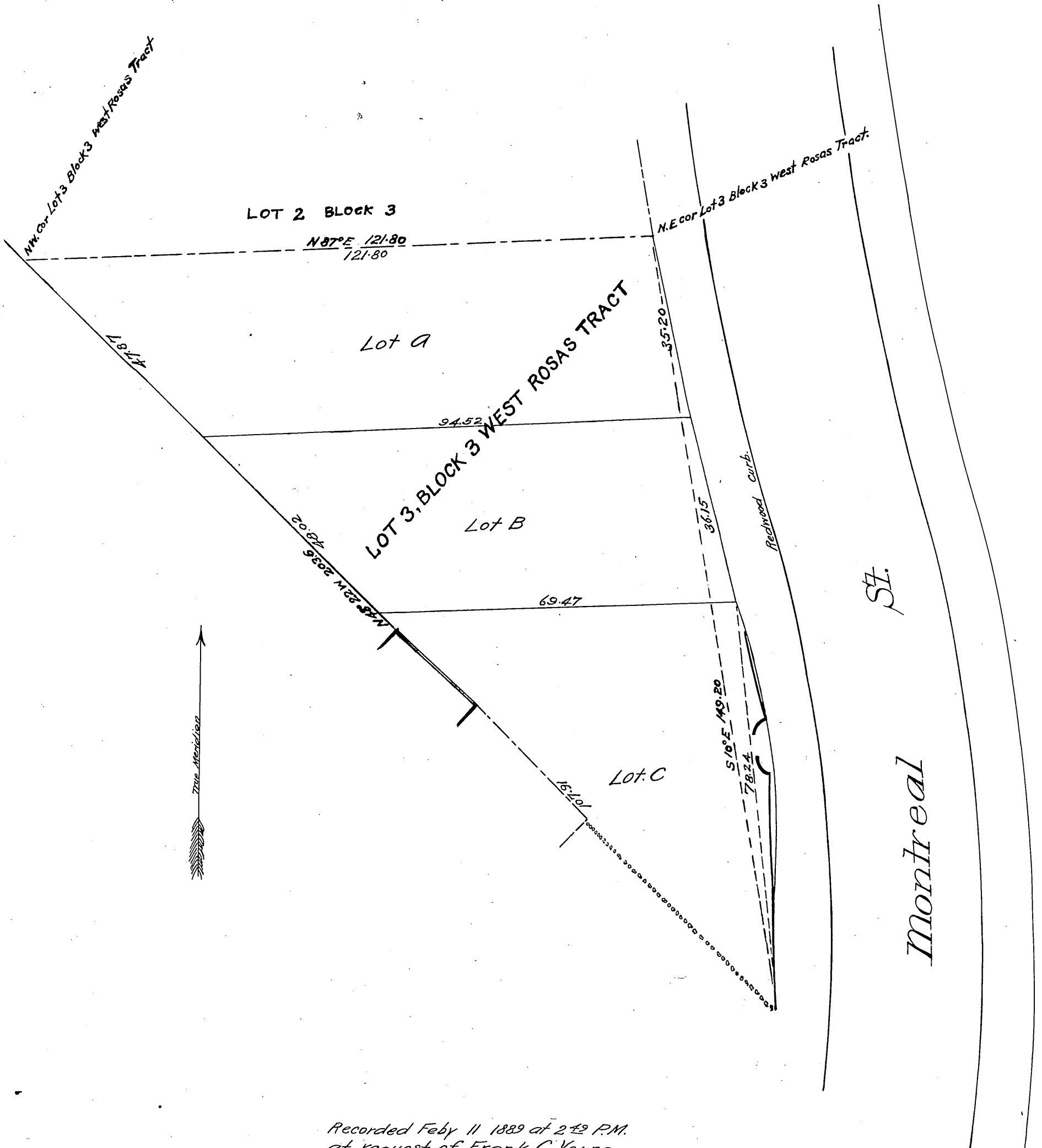


# MAP

OF

## Frank C. Young's Subdivision of Lot 3, Block 3 West Rosas Tract Los Angeles City, Cal

Surveyed Oct 16<sup>th</sup> 1888 by J. H. Dockweiler.  
Scale 20 feet to one inch.



Recorded Feb 11 1889 at 2:49 P.M.  
at request of Frank C. Young.

*Handwritten signature*