

Copy made
01/11/17

01

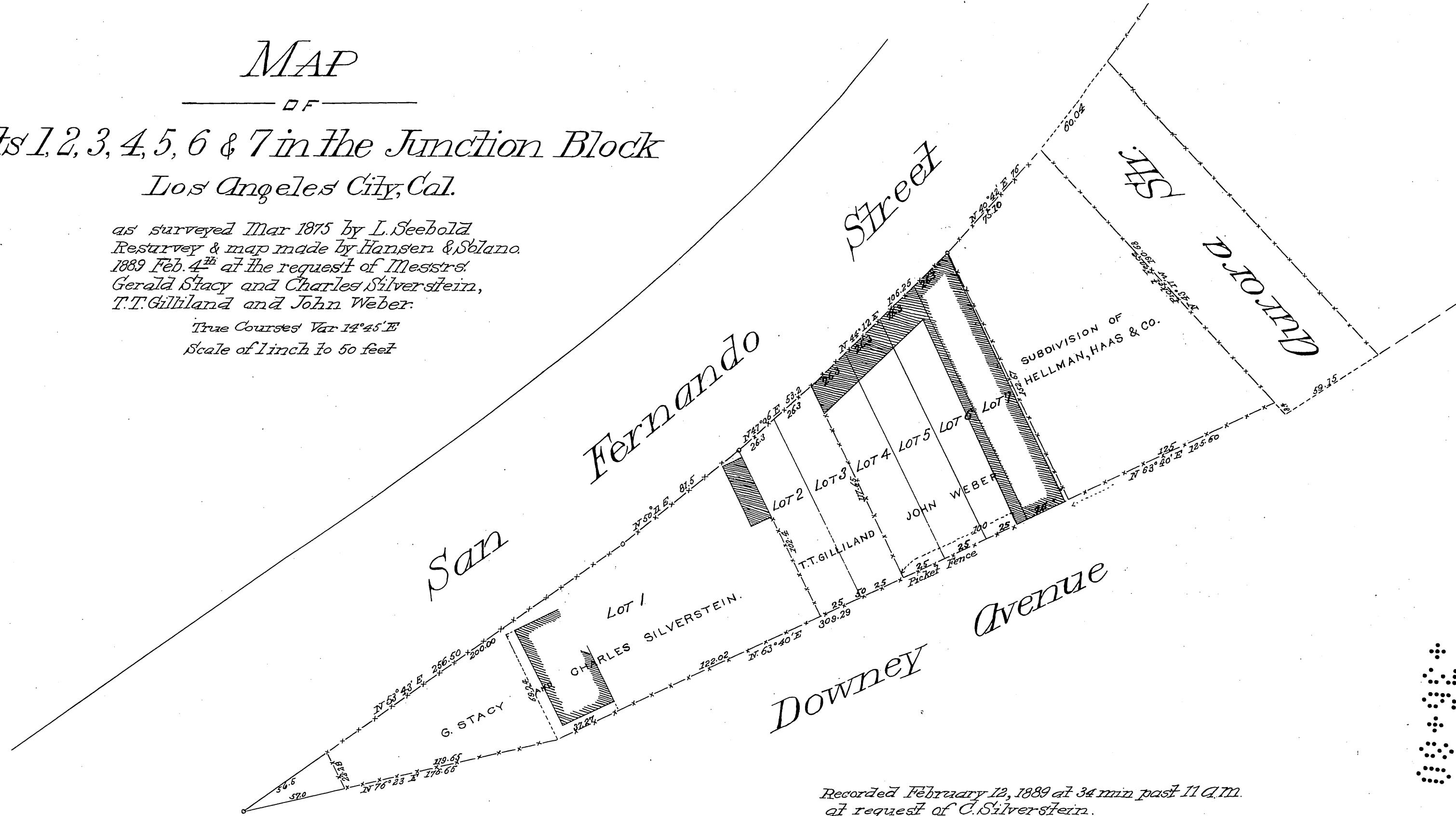
MAP

— OF —

Lots 1, 2, 3, 4, 5, 6 & 7 in the Junction Block Los Angeles City, Cal.

as surveyed Mar 1875 by L. Seebold
Resurvey & map made by Hansen & Solano
1889 Feb. 4th at the request of Messrs
Gerald Stacy and Charles Silverstein,
T.T. Gilliland and John Weber.

True Courses Var 14°45' E
Scale of 1 inch to 50 feet



Recorded February 12, 1889 at 34 min past 11 A.M.
at request of C. Silverstein.

Downey Ave. changed to Olympia St. Ord. 432
 Olympia St. " " San Fernando St. Ord. 4093
 San Fernando St. " " North Spring St. Ord. 36208

