

MAP

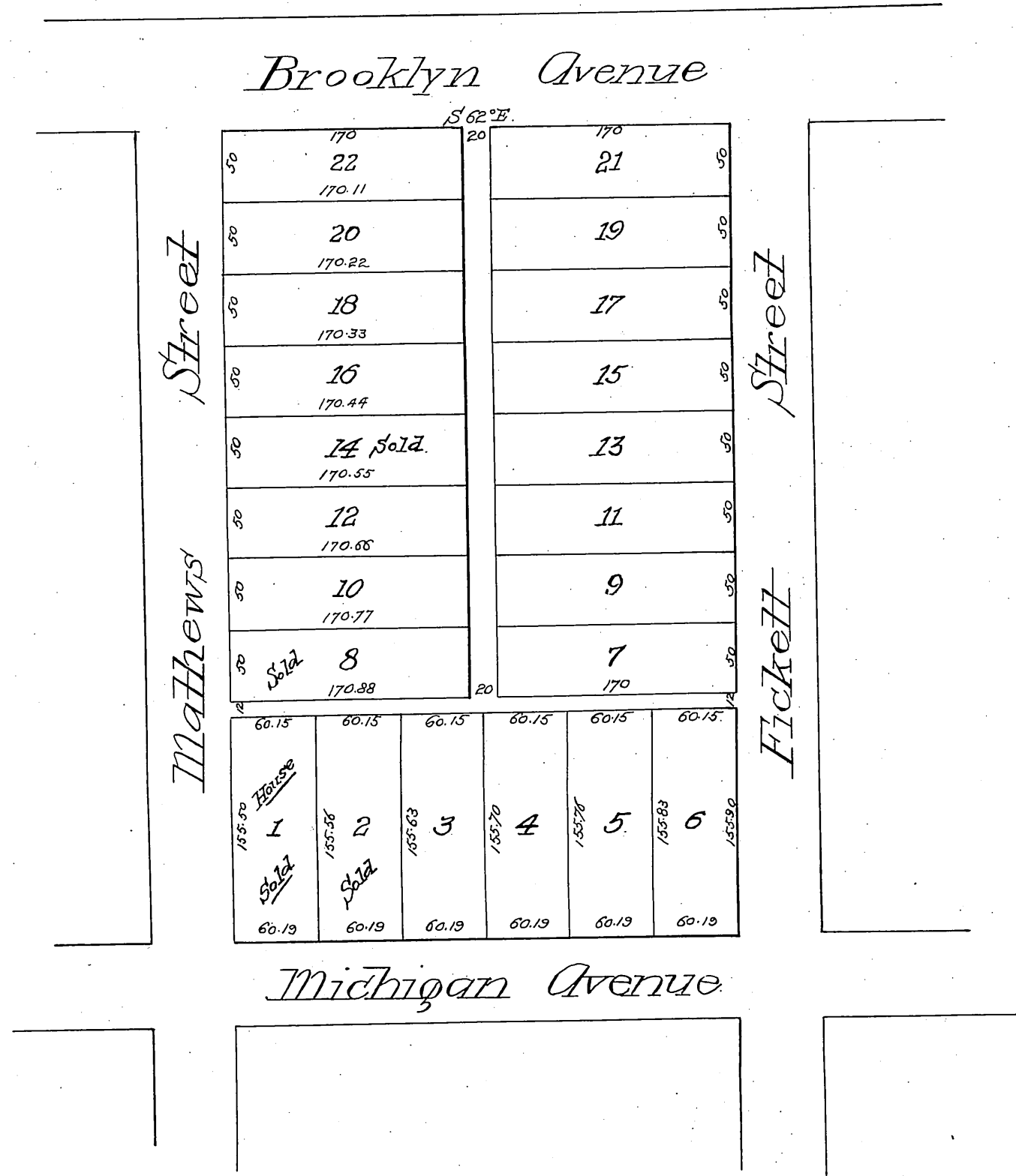
OF

Dennis & Cook's

Subdivision of Lot 3 of the Mathews and Fickett Tract
Boyle Heights, Los Angeles, Cal

Surveyed April 1884 to take the place of subdivision
made of same lot for A. H. Judson in Dec. 1883
by E. T. Wright

Scale 50 feet one inch



(Reduced to the scale of 100 feet to one inch)
Recorded Feb. 20, 1889 at 15 min past 11 A.M.
at request of M. Y. Kellam.

John W. Francis, County Recorder.

Copied
A.M.