

PECKS

Replat of Block H and part of Block J of *The Raymond Addition*

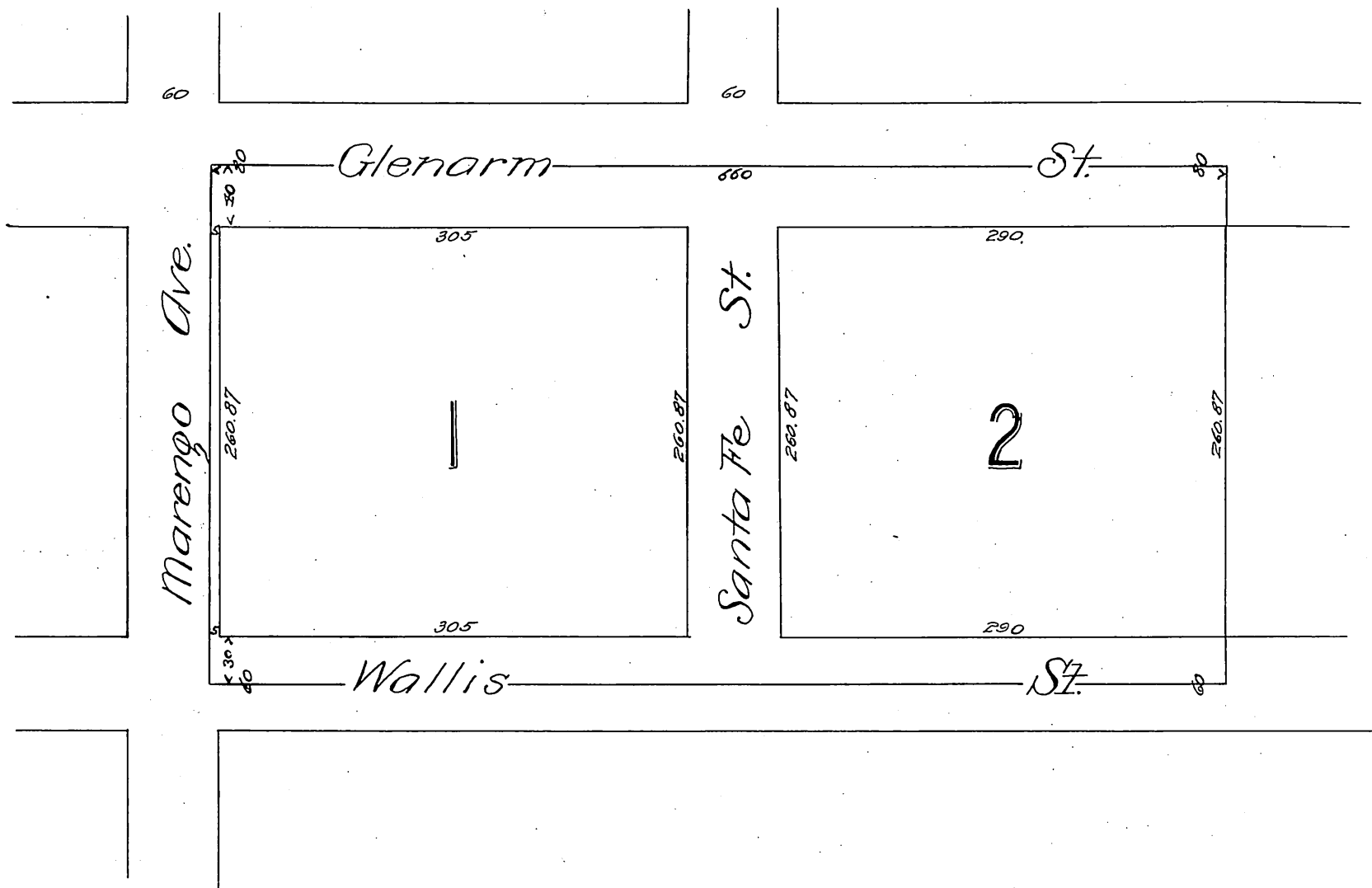
— T O —

Pasadena

as recorded in Book 18, Pages 19, 20, & 21 of Miscellaneous Records of Los Angeles County Cal.

Scale 100 feet to 1 inch

J.O. Marsh Draughtsman.



Recorded Feby. 21, 1889.

at request of Philetus Peck

Santa Fe St not a public highway Ord of Res 1573 D:18-98

*Compd
C.M.M.*