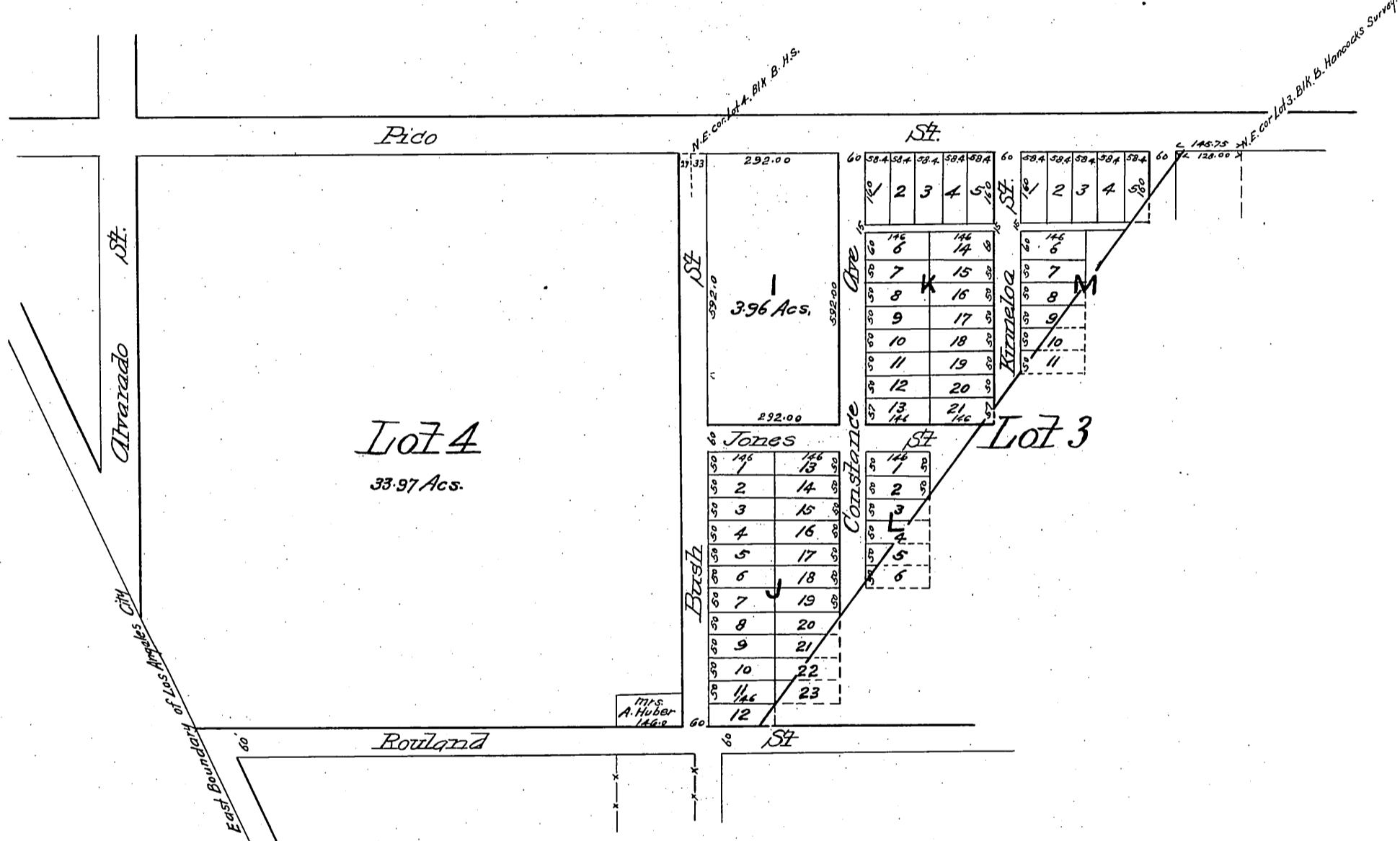


PLAT
 OF THE
Re-Subdivision of the Jones Tract
 in the
 City of Los Angeles, Cal

Scale 200 ft to one inch.



— Note —
 The Re-subdivision of the Jones Tract is a subdivision of the Westerly part of Lot 3 Block B. of Hancock's Survey in the City of Los Angeles, Fractional Lot 4. Block B not being subdivided.

(Reduced to the scale of 200 feet to one inch)
 Recorded Feb. 27. 1889 at 2 25 P.M.
 at request of M. G. Jones.

*Checked
 C.M.M.*

36
 26