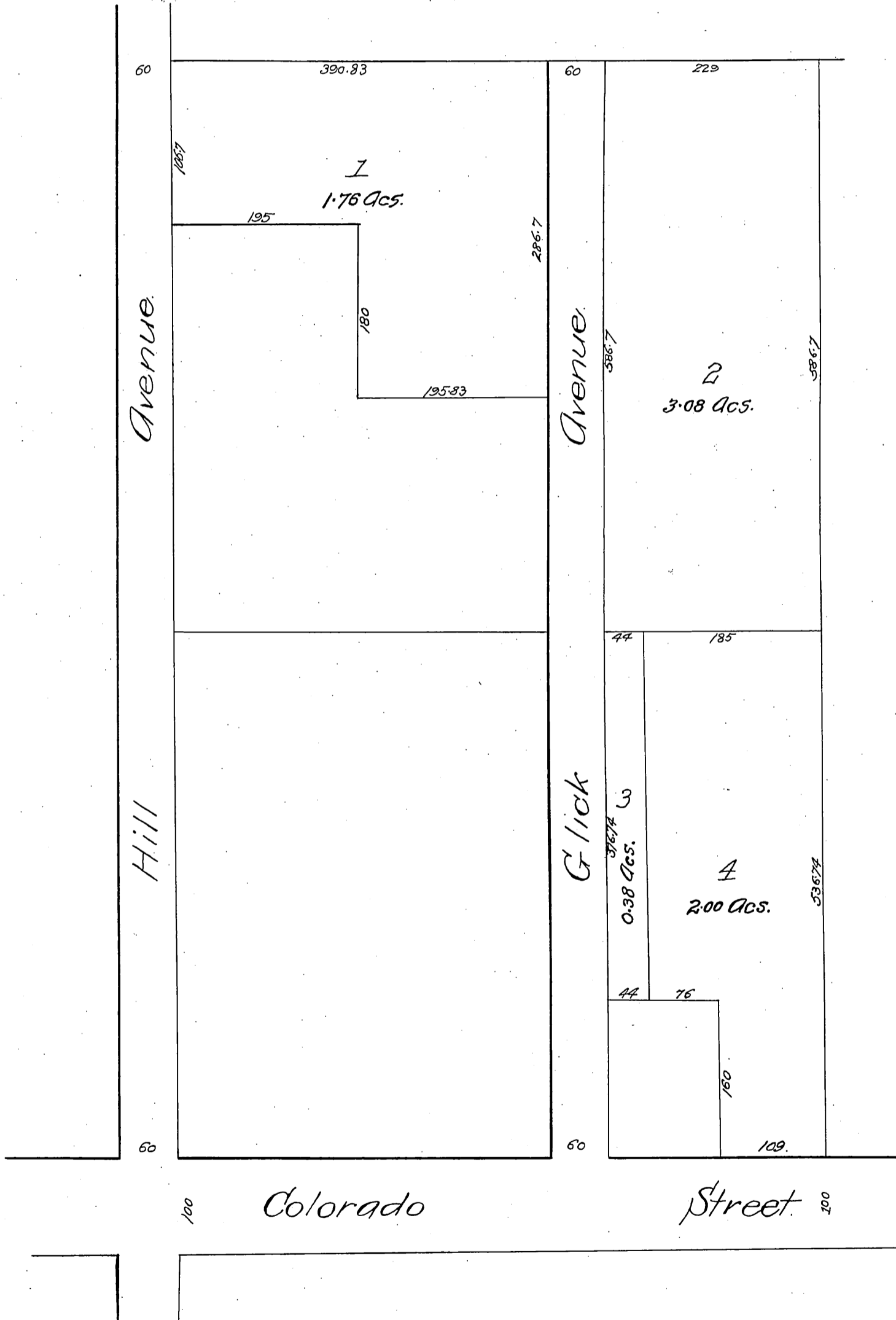


Replat
of part of
F. F. Stetson's Subdivision

as recorded in Book 24, Page 79 Miscellaneous
Records of Los Angeles Co., Cal.

Scale 120 feet to 1 inch

J. O. Marsh, Draughtsman.



Recorded Mar. 2, 1889, at the request of F. F. Stetson.

*Conveyed
O. M. S.*