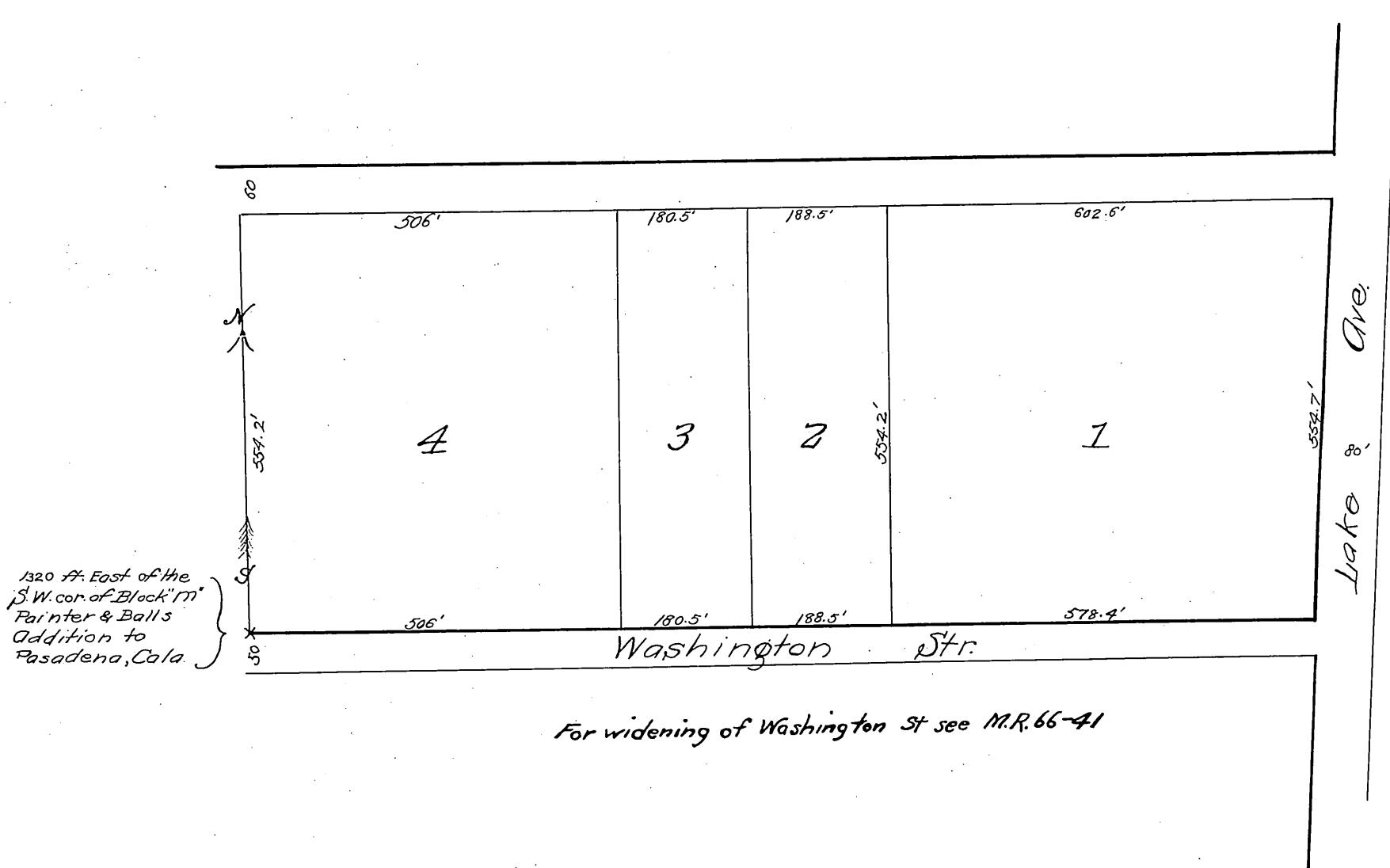


*Galbraith and Abbott's Subdivision*  
 in Block "M" Painter & Ball's Addition to  
 Pasadena, Cal.



Recorded March 5, 1889.  
 At request of D. Galbraith.

Street vacated M.R. 66-41  
 North 30' of lot 3 D:2751-317 - D:8-53  
 Por. of Rio Grande St. vac. D:36-207-O.R. 2691-196

*copy  
 of map*