

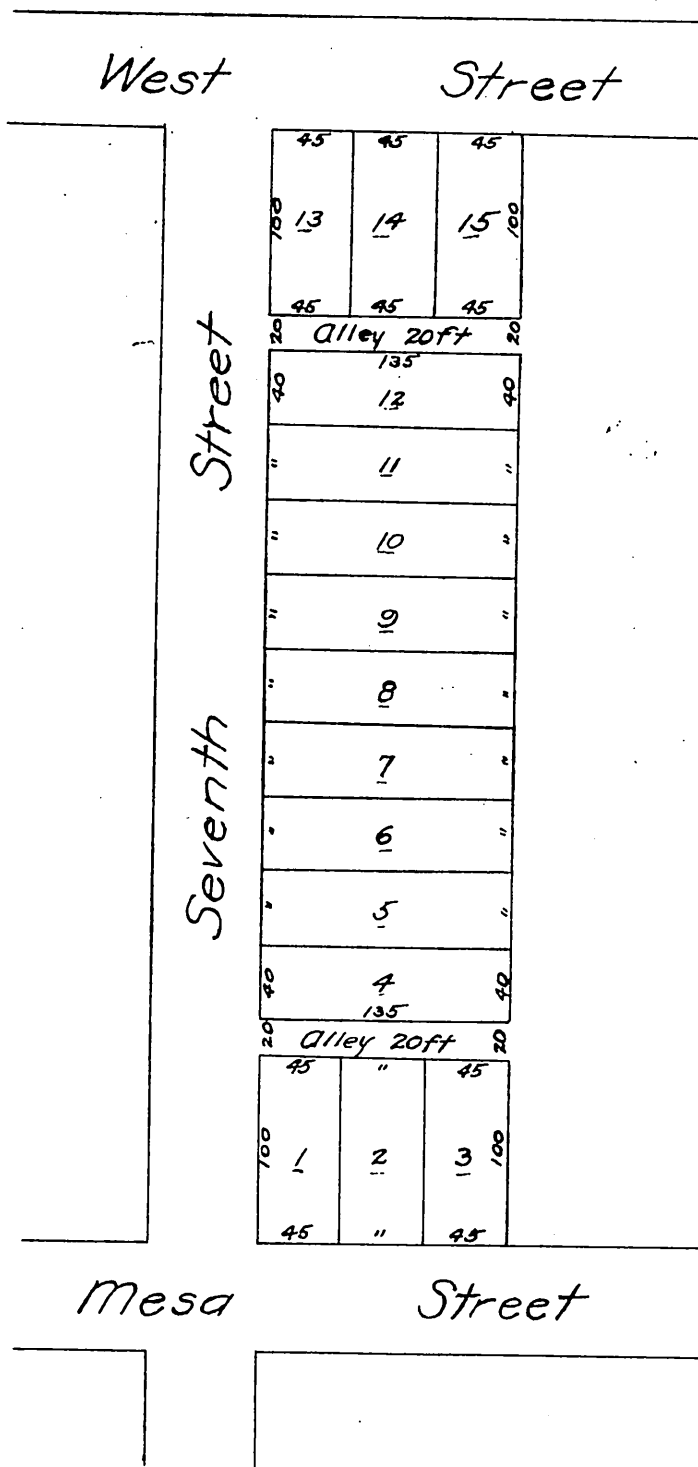
MAP

OF

W.J. Sherriffs Subdivision

of Lots 2 & 3 of Block 7 in the City of San Pedro, County of Los Angeles Cal. according to the survey made by C.T. Healy in the partition of the ^{Rancho} Palos Verdes in 1882

See Deed Book 460 Page 249 of Deeds in Los Angeles Cal.



A full, true and correct copy of the original (reduced to the scale of 100 feet to one inch) recorded March 11 1889 at 40 min past 12 M at request of M.J Sheriff

John W Francis County Recorder

By Sarge Dugbee Deputy