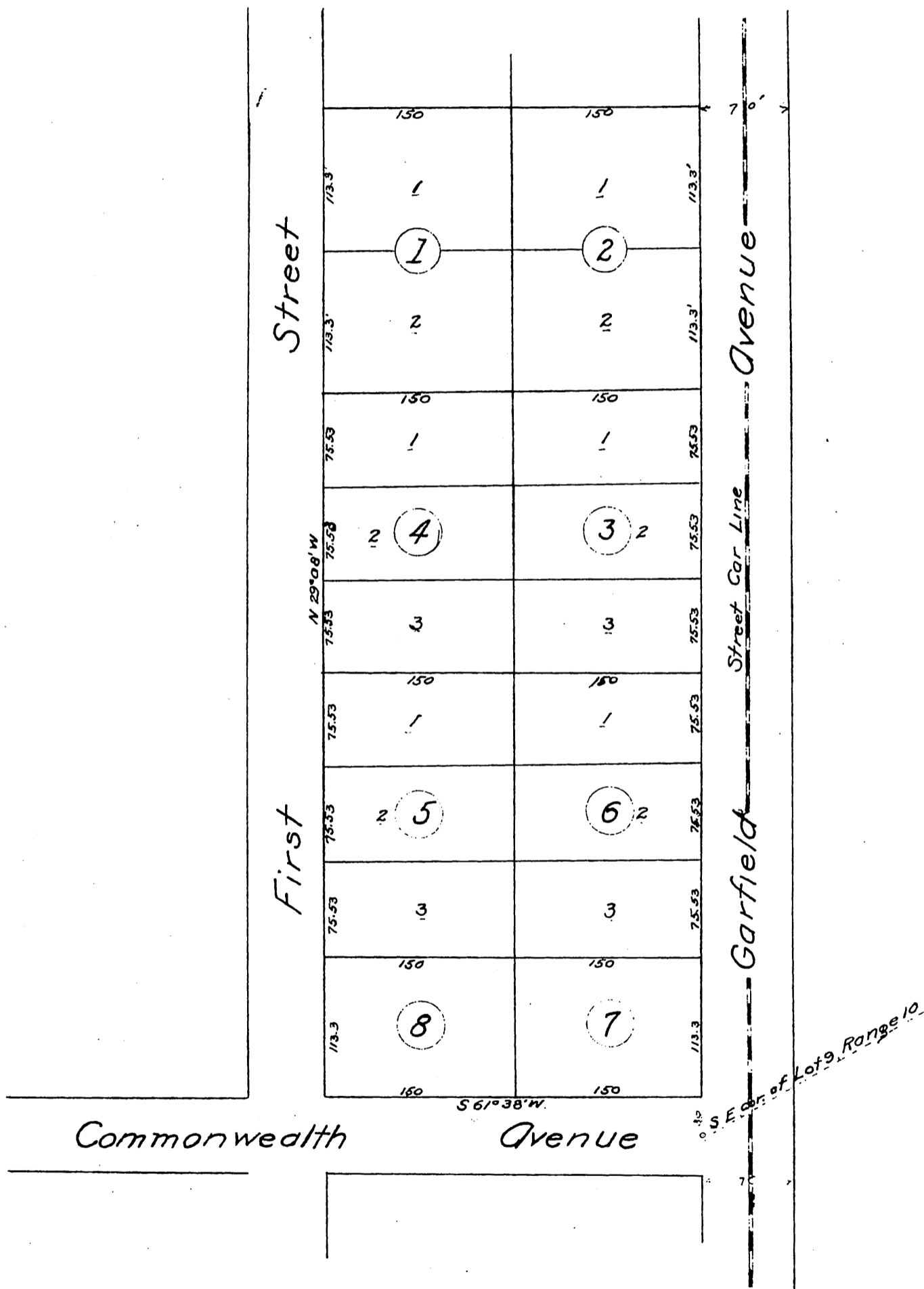


# J.M. Elliott's Subdivision as Trustee,

of Block 1, Library Tract As recorded in Book  
29 Page 27 Miss Records of Los Angeles County

Scale 100 ft to 1 inch

Gervaise Purcell C.E. Dec. 1888.



A full, true and correct copy of the original  
recorded March 15, 1889 at 35 min past 2 P.M.  
at request of J.M. Elliott Trustee

John W Francis County Recorder

By George Bugbee Deputy