



Amended

MAP

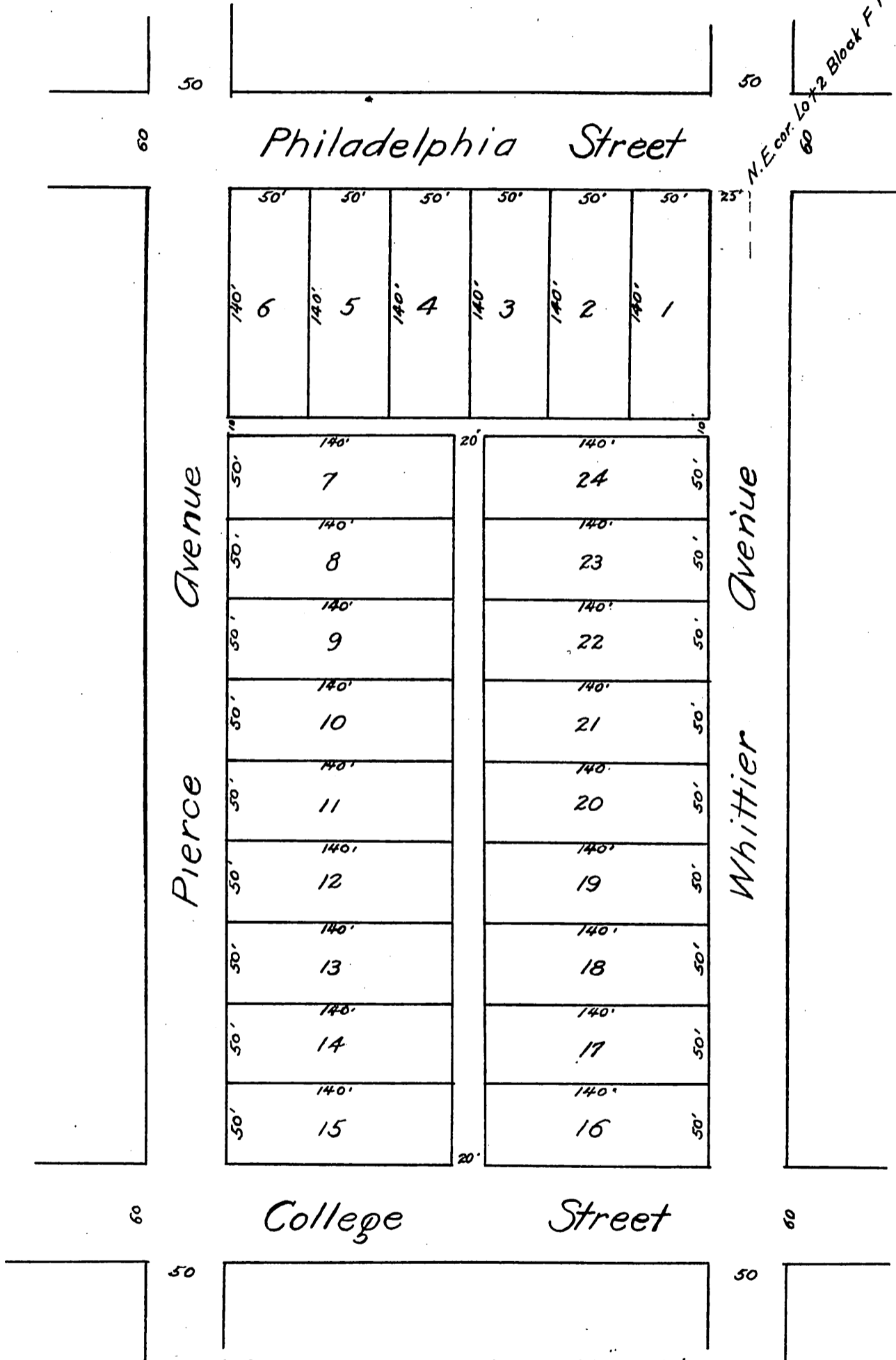
OF

Philip O. Nokes's Subdivision

of Lot 2, Block F of the Pickering Land & Water
Cos. Subdivision of the John M. Thomas Ranch.

Whittier

Los Angeles Co., Cal.



A full, true and correct copy of the original
(reduced to the scale of 80 feet to one inch)
recorded April 20, 1889 at 42 min. past 10 A.M.
at request of Phillip O. Nokes.

John W. Francis County Recorder
By George Hughes Deputy.

51