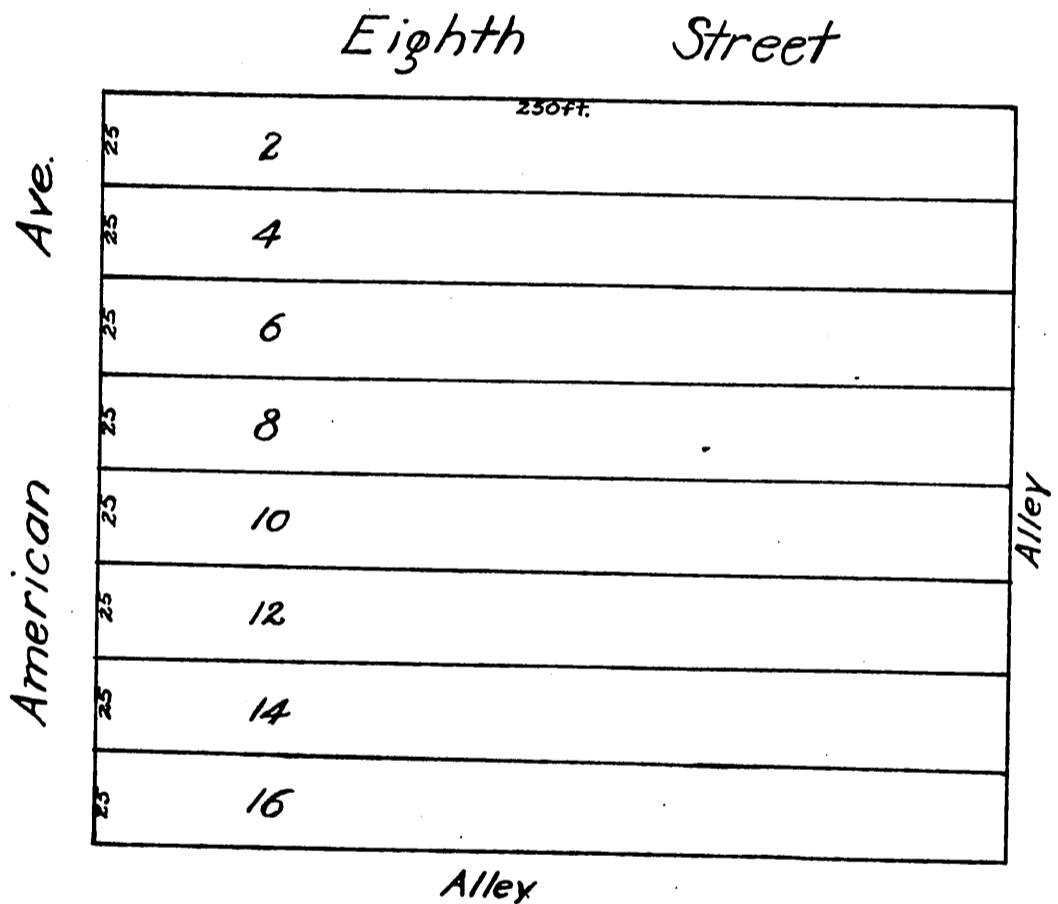


37

Charles R. Foote's

Subdivision of Lots 2, 4, 6, 8, 10, 12, 14, 16, 29, 31, 33, 35 in Robinson
& Brainerd's Subdivision of Block 30 Long Beach, Cal.

Scale 200 ft to the inch.



A full, true and correct copy of the original
recorded April 25, 1889 at 8 min. past 3 P.M.
at request of C. R. Foote

John W. Francis, County Recorder
By *George Dugbee* Deputy.