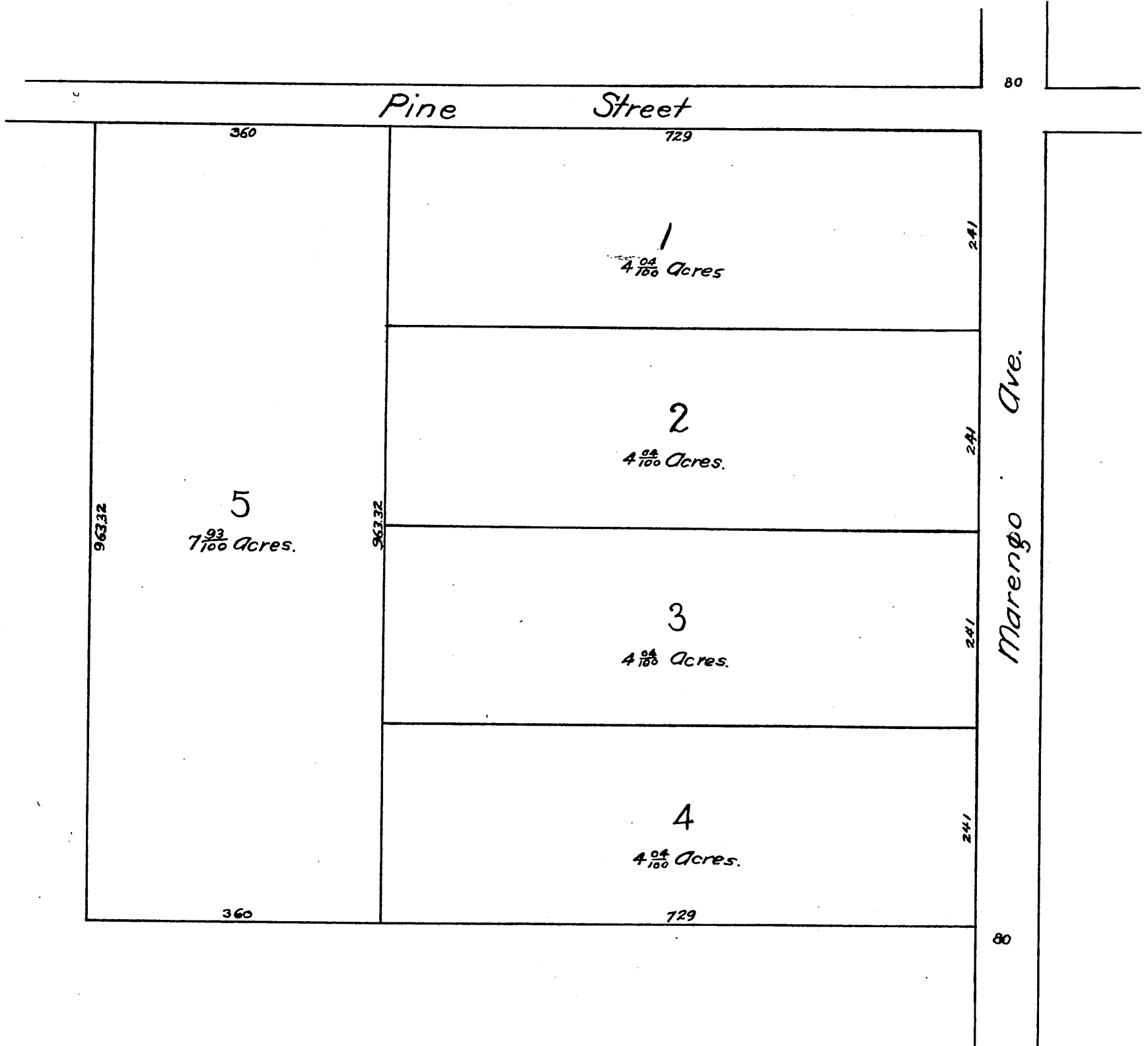


THE
McGriff Tract
 Being a subdivision of Lot 8 Block A
 Marengo Tract
 Surveyed by Gervaise Purcell, March 1889

Scale 100 ft to 1 inch.



A full, true and correct copy of the original
 reduced to the scale of 150 feet to one inch
 recorded March 25, 1889 at 58 min past 3 P.M.
 at request of G.W. McGriff.

John W. Francis County Recorder.
 By *George Hughes* Deputy.