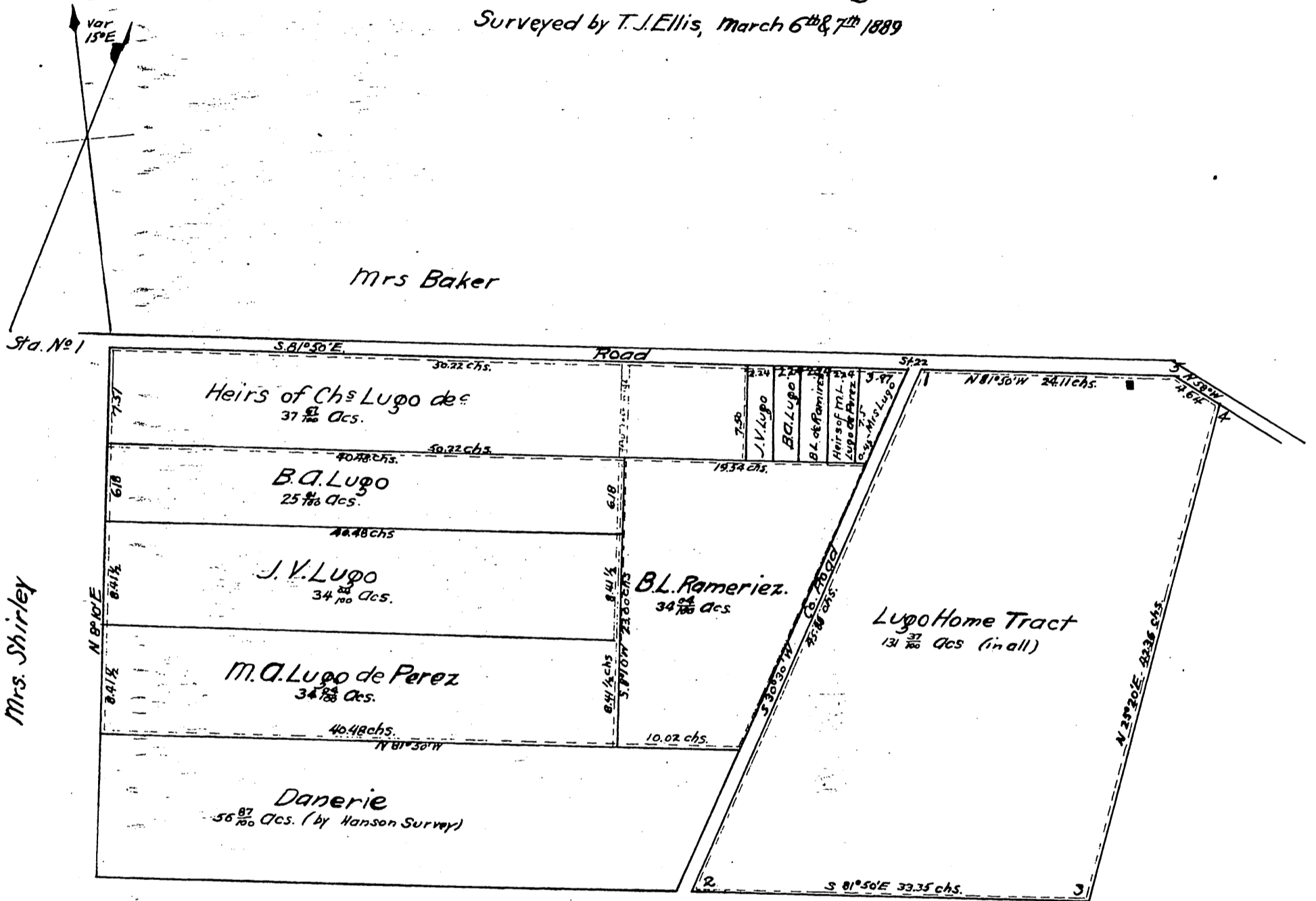


PLAT

of survey of the partition of
Andrea Ballesteros de Lugo Tract

Surveyed by T.J. Ellis, March 6th & 7th 1889



A full, true and correct copy of the original
(reduced to the scale of 10 chs. to one inch)
recorded March 26, 1889 at 18 min past 2 P.M.
at request of Andrea B de Lugo

John W Francis, County Recorder
By *George Dugles* Deputy