

MAP

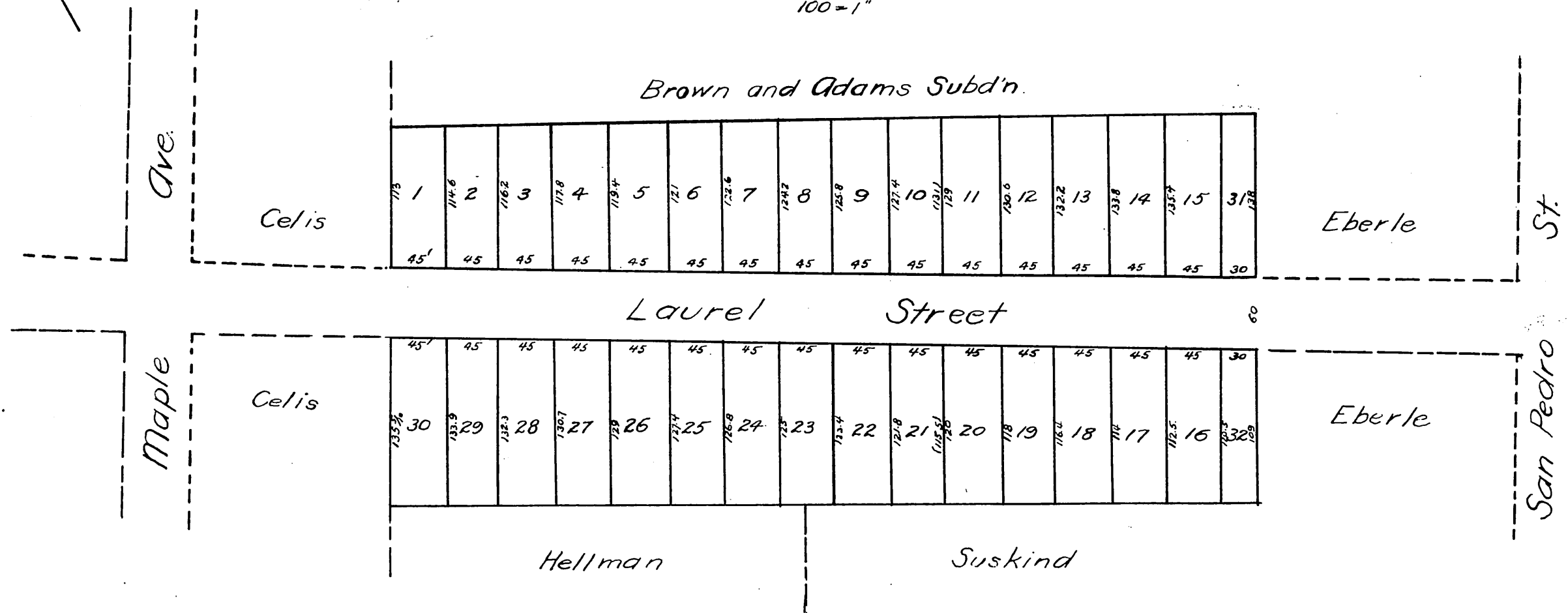
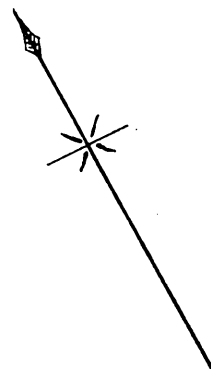
OF THE

Laurel Tract

Los Angeles City

*Being M. F. O'Dea's subdivision of the 5 acres
marked E Kennedy upon a map recorded in
book 1192 page 423 Miscellaneous Records of
Los Angeles Co. Cal.*

100 = 1"



*A full, true and correct copy of the original
recorded April 1, 1889 at 13 min past 3. PM
at request of M. F. O'Dea
John W. Francis Co. Recorder.
By George W. Dugbee Deputy*

