

# MAP

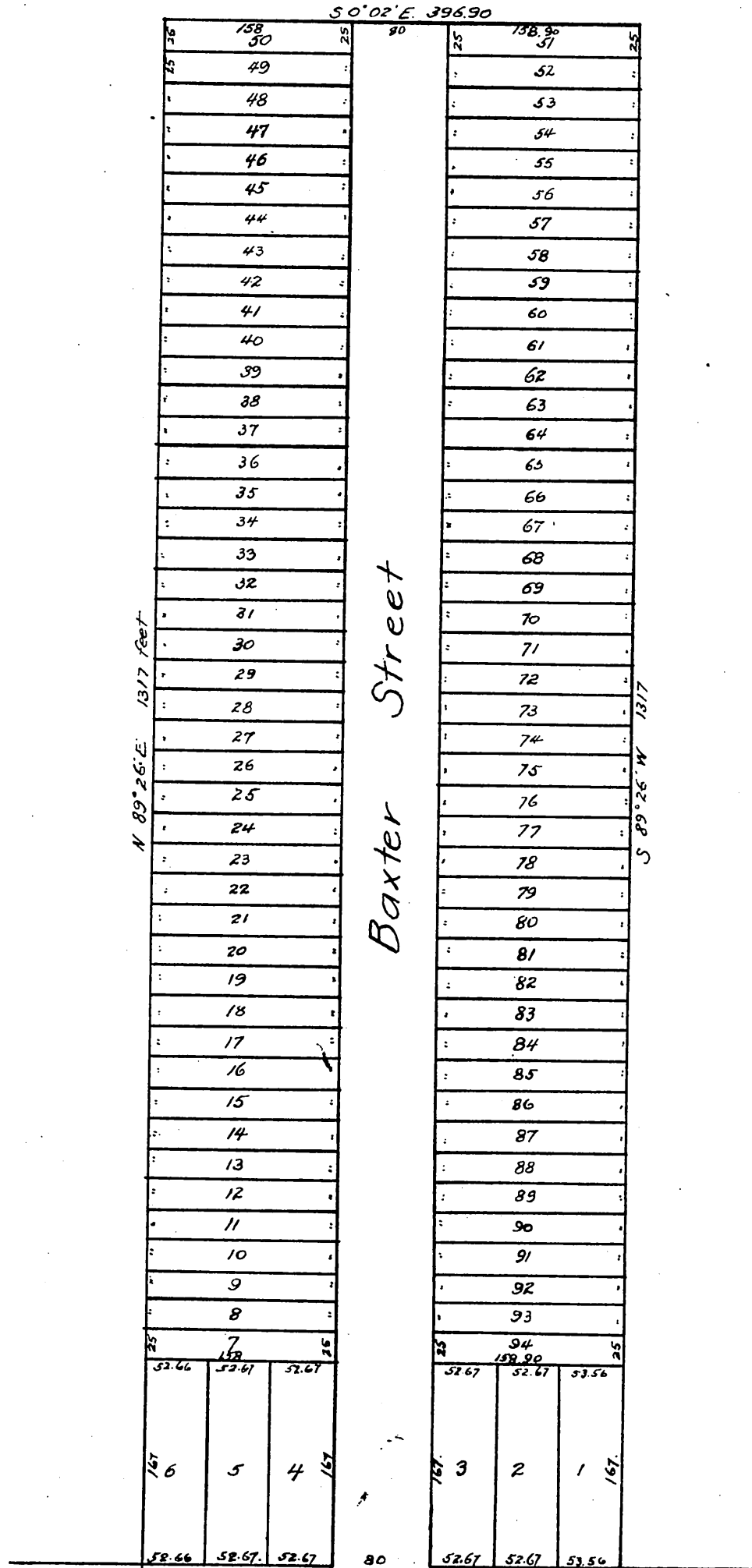
OF THE

## Baxter Tract

Los Angeles County Cal.

Surveyed Dec. 1888 by Geo E. Pillsbury  
Scale 50 ft to 1 inch.

Note: The Baxter Tract is a subdivision of the Southerly 12 acres of the N.E. 1/4 of the N.W. 1/4 of Sec 18 T2S. R13W. S.B.M.



A full, true and correct copy of the original  
(reduced to the scale of 120 feet to one inch)  
recorded April 11, 1889 at 33 min past 9 A.M.  
at request of C. M. Baxter

John W. Francis, County Recorder.  
By *George Dugbee* Deputy.