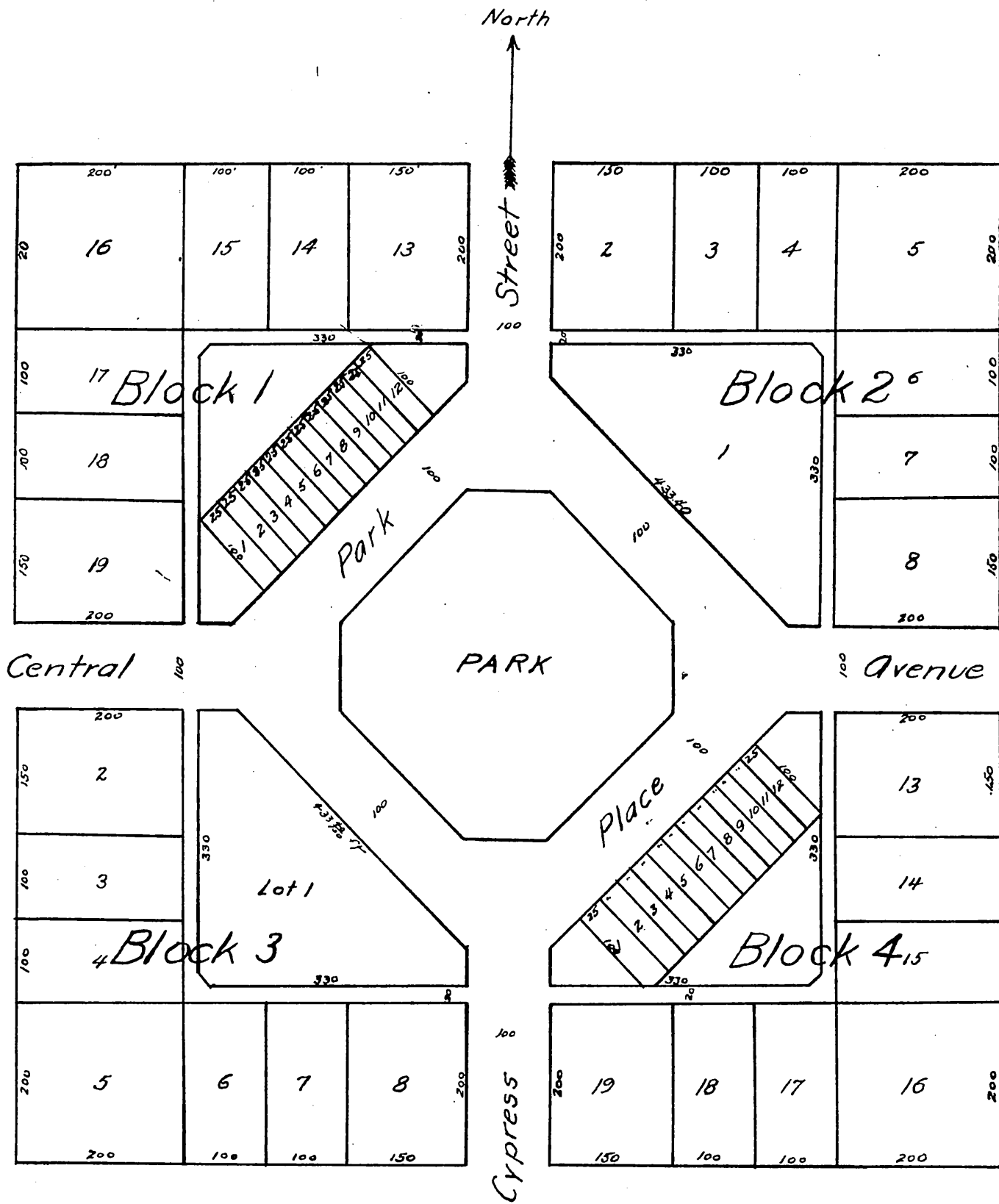




MAP OF Fairmont

as laid out by Fairmont Land & Water
Co being a part of the SW quarter
of Sec. 36 Town 8 N. R. 15 W. S.B.M.



A full, true and correct copy of the original
recorded April 16 1889 at 46 min past 4 P.M.
at request of Fairmont Land & Water Co

John W. Francis, County Recorder
By George R. Ruggles Deputy