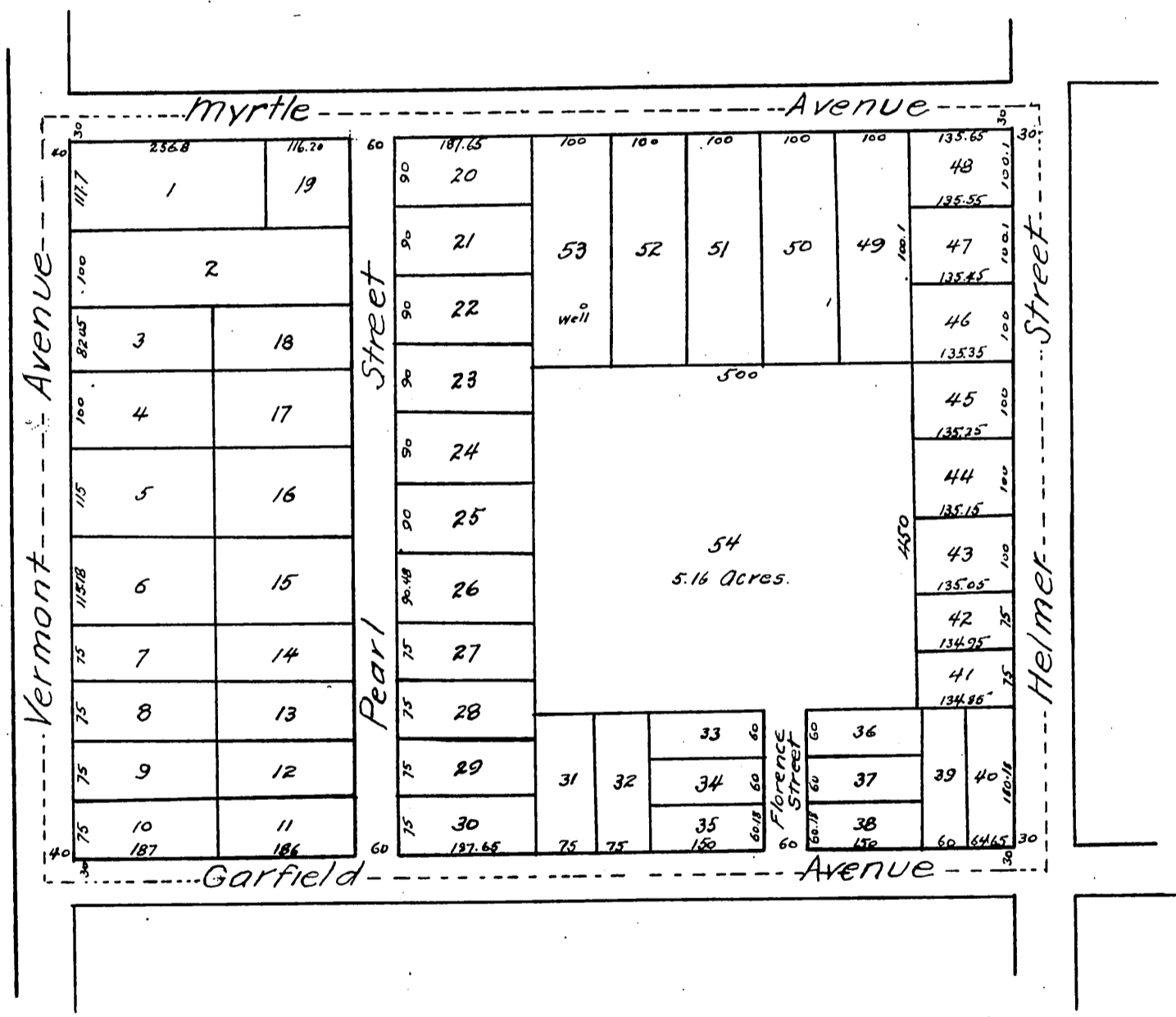


Edgemont

A subdivision of Lot 8 and South 10 Acres
 Lot 3, West Subdivision of the Lick Tract
 Los Angeles County, California

Surveyed and Platted January 1888 by Stephens & Miller



A full, true and correct copy of the original
 (reduced to the scale of 200 feet to one inch)
 recorded April 17, 1889 at 25 min past 2 P.M.
 at request of Gregory Bro's & Green.
 John W. Francis, County Recorder
 By: George Ruggley Deputy