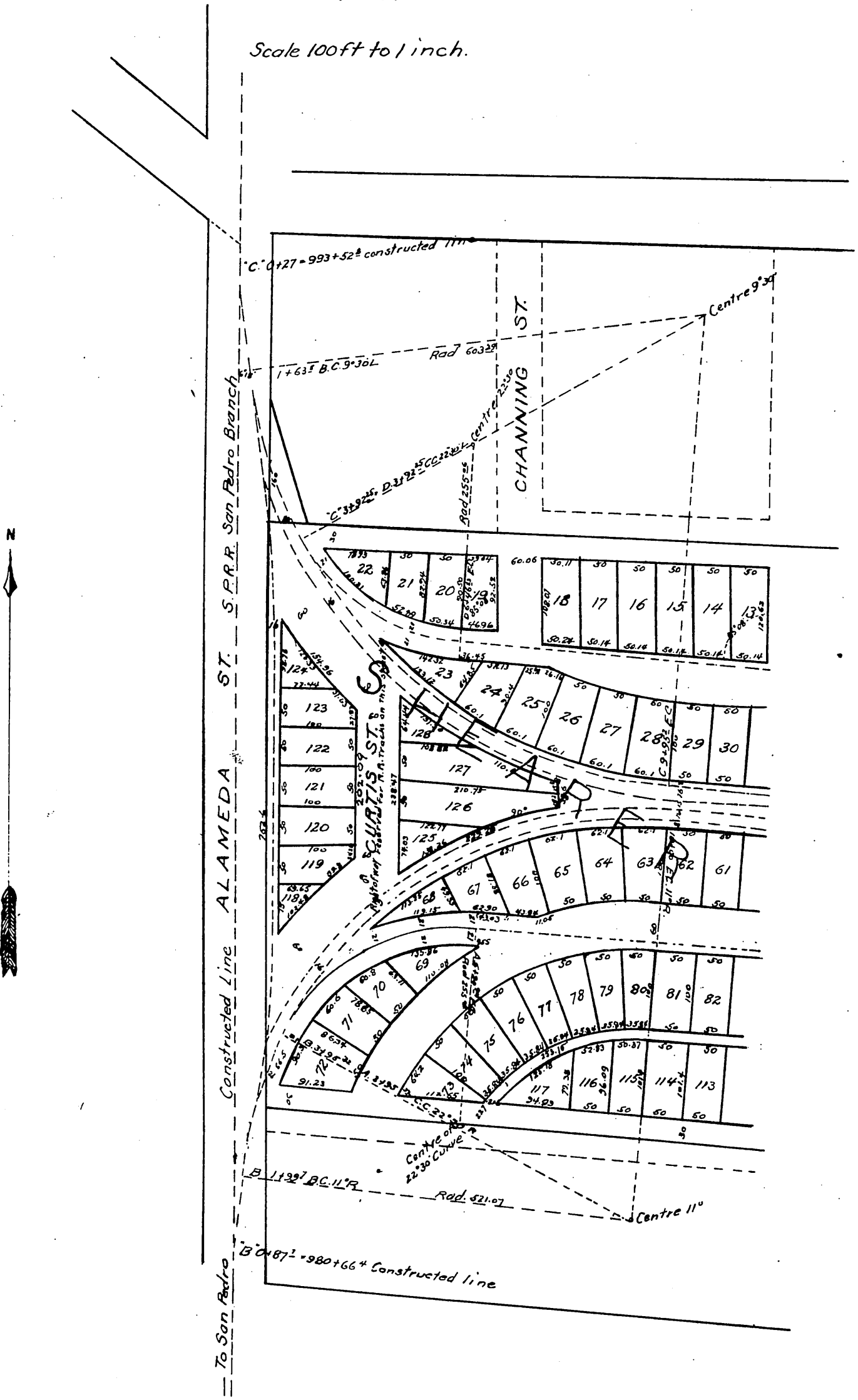
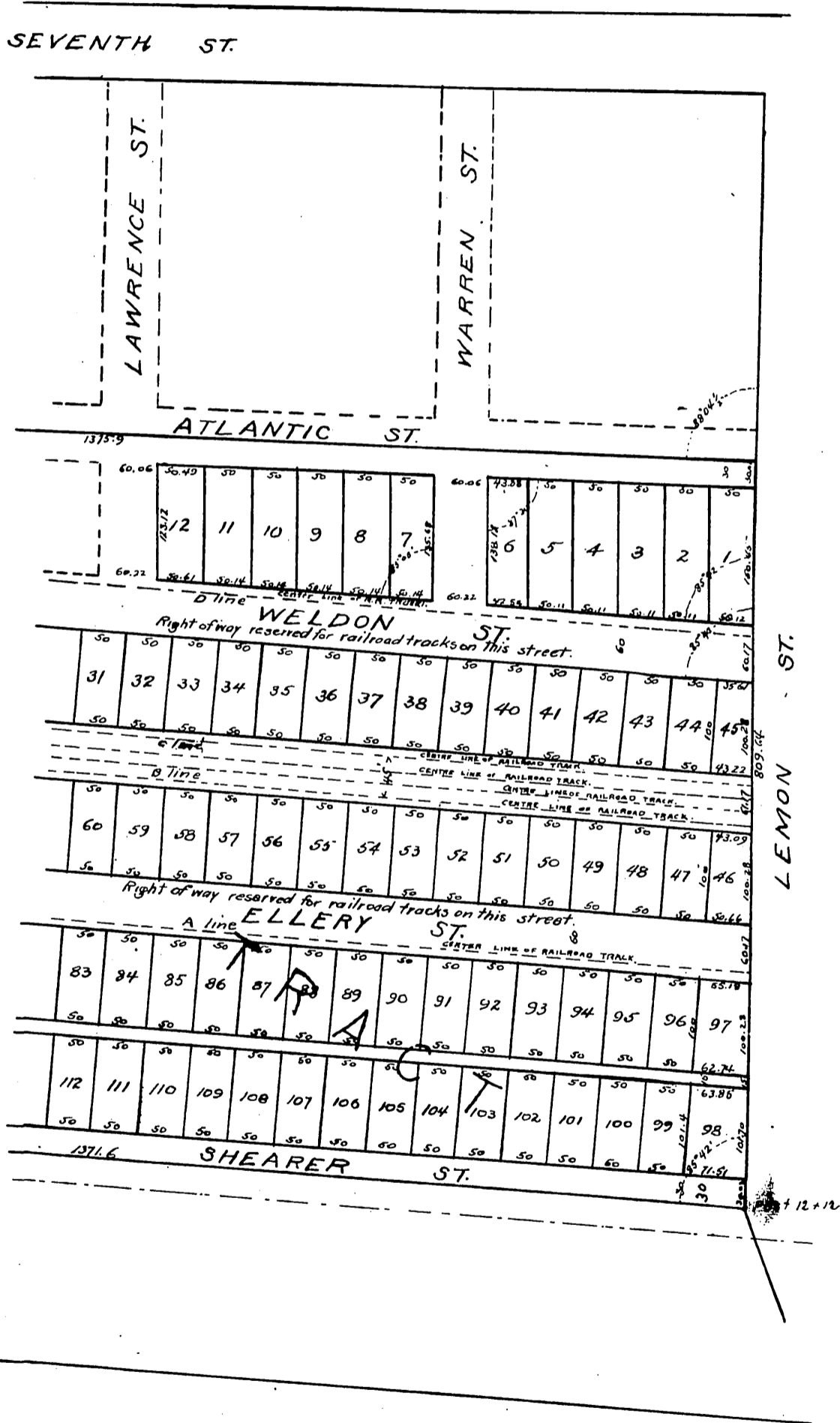


MAP
 showing the subdivision of the
Shearer Tract
 — owned by the —
Pacific Improvement Company
 in the City of Los Angeles.
 1888.

Scale 100ft to 1 inch.



Note. The right of way, to lay, maintain and operate steam railroad tracks throughout the length of Weldon, Ellery and Curtis streets is reserved for the benefit of the Southern Pacific Railroad Co.



A full, true and correct copy of the original
 (reduced to the scale of 150 feet to one inch)
 recorded April 19th 1889 at 29 min past 11 A.M.
 at request of T. J. Weldon.

John W Francis County Recorder.
 By George Dugbee Deputy.