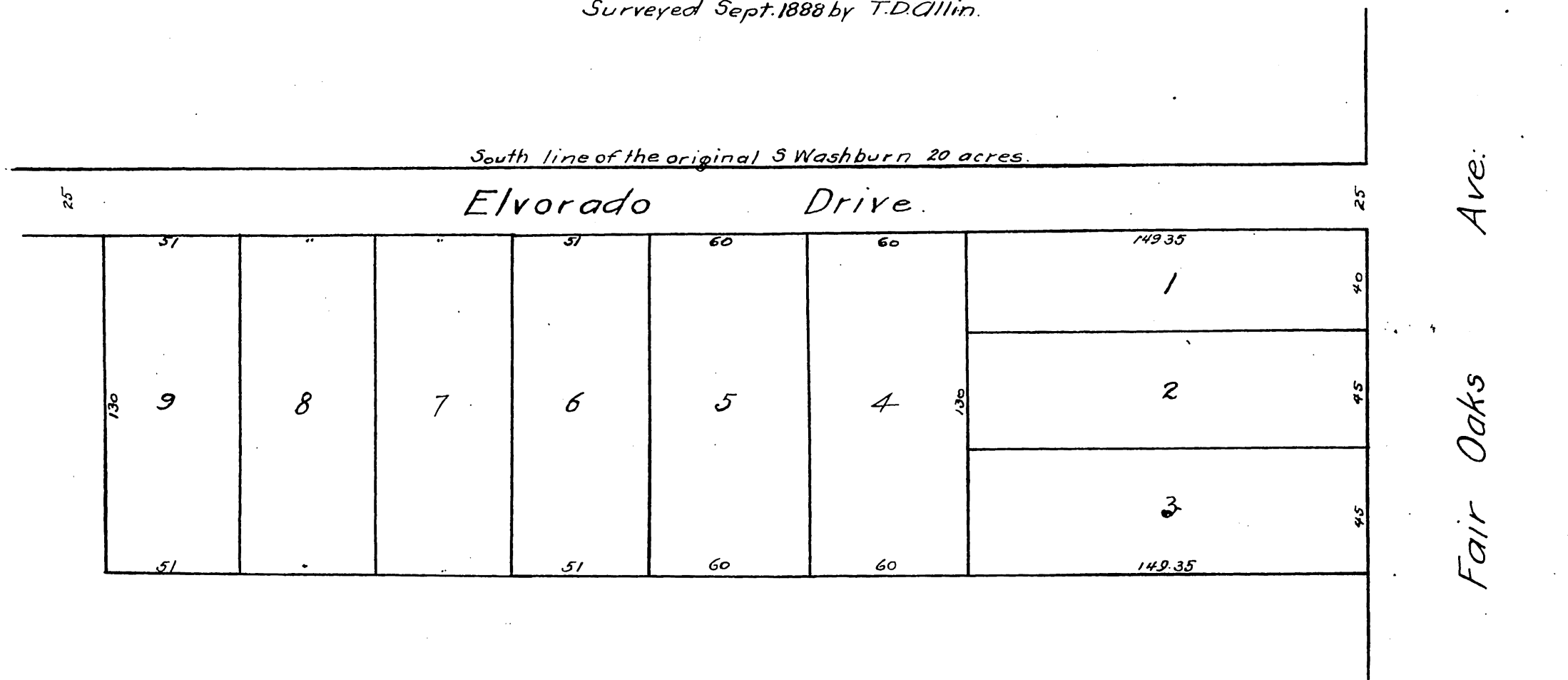


W. L. Woodward's

Subdivision of a portion of the Chas. R. Foot Tract.
Pasadena, Cal.

Surveyed Sept. 1888 by T. D. Allin.



A full, true and correct copy of the original
recorded May 3, 1889 at 34 min past 4 P. M.
at request of W. L. Woodward.

John W. Francis, County Recorder
By *George B. Dugbee* Deputy.



Fair Oaks Ave.