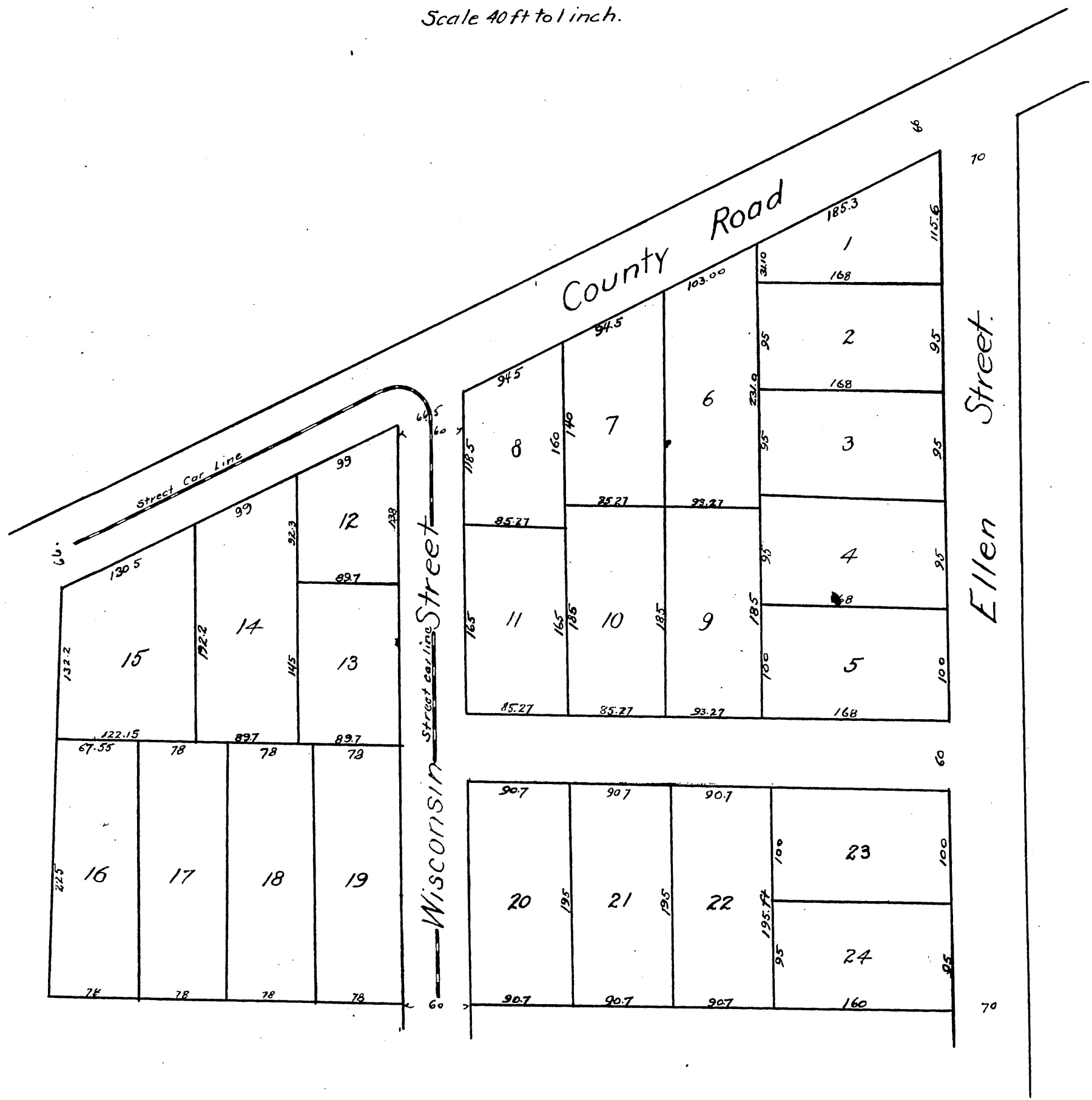


MAP  
OF  
Firey and Rhorer's  
Subdivision of Lot 17 & part of 18  
Burdicks Addition to  
Pomona, Cal.

Surveyed in Sept 1887 by H.E. Stoddard C.E.  
Scale 40 ft to 1 inch.



A full, true and correct copy of the original  
(reduced to the scale of 100 feet to one inch)  
recorded June 1, 1889 at 10 min past 12 M.  
at request 1st National Bank, Pomona  
John W. Francis, County Recorder.  
By George R. Dugree, Deputy.