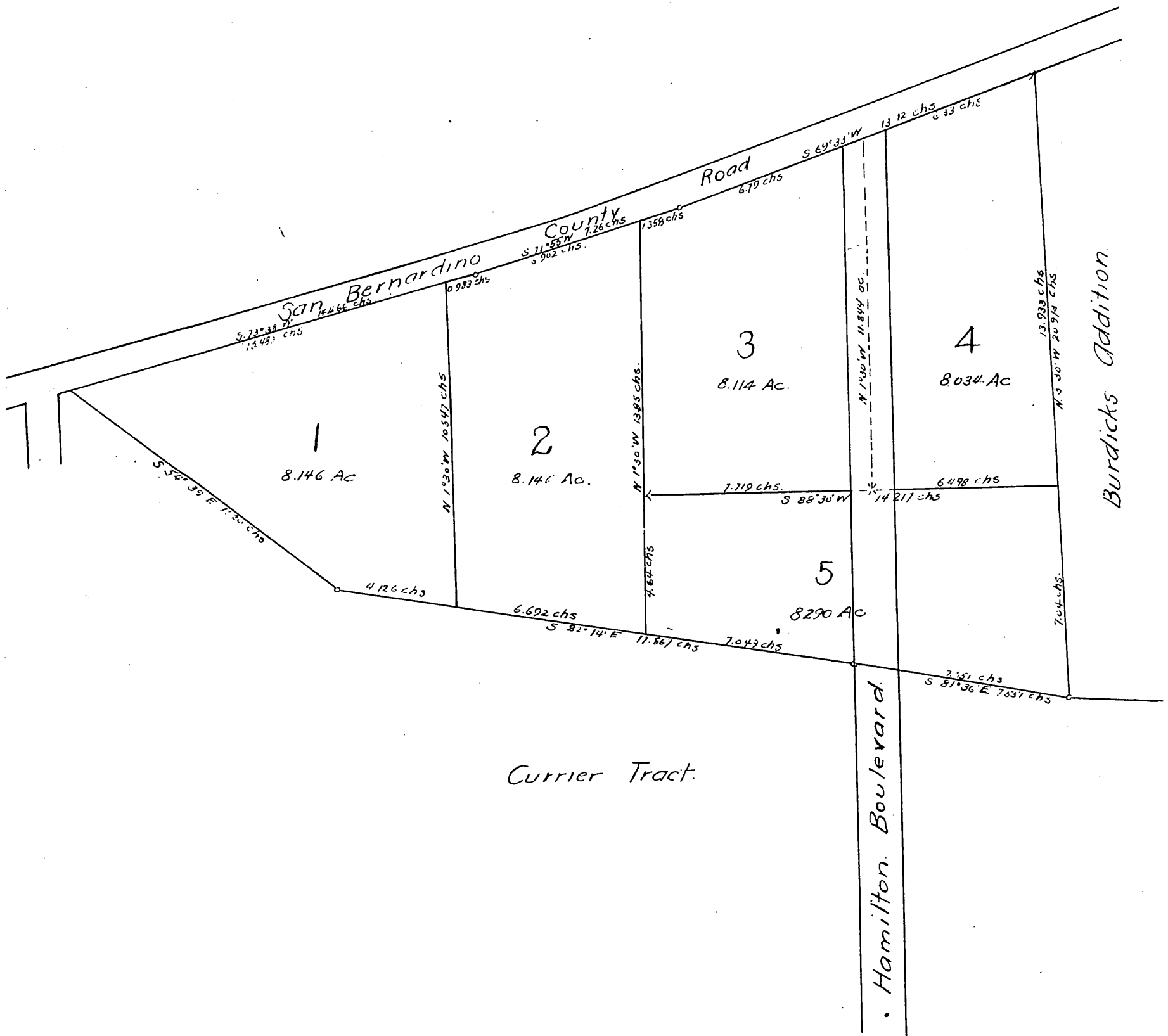


MAP
 of a portion of
 Alvarado Tract
 Rancho San Jose
 Los Angeles Co, Cal.

Surveyed June 1889 by Jas T Taylor & Co.
 Scale 2 chs to 1 in



A full, true and correct copy of the original.
 (reduced to the scale of 4 chains to one inch)
 recorded June 13, 1889 at 31 min past 9. A.M.
 at request of A. A. Alvarado.

John W. Francis, County Recorder
 By George Bugbee, Deputy.