

MAP

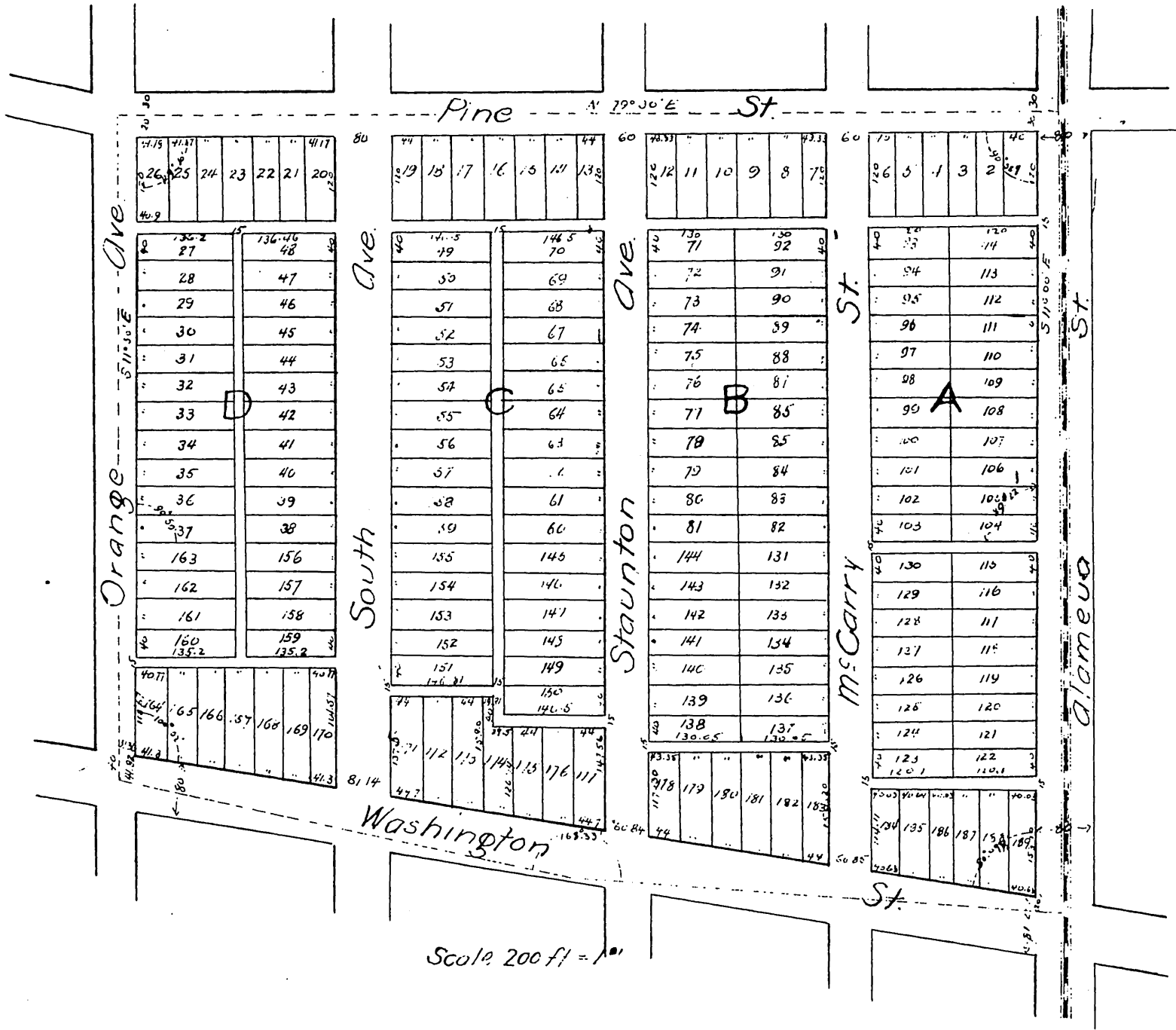
OF THE

Meade & Dalton Tract

IN

Los Angeles, Cal.

Surveyed by W.D. Buckner
Jan 1889 23 N Spring St.



The streets and alleys designated on the annexed plat are hereby dedicated as public streets and alleys. The lots numbered from One (1) to 114, inclusive, with the streets and alleys adjoining the same are identical in every respect with the lots having the same numbers and corresponding streets and alleys of a subdivision of said Meade & Dalton Tract surveyed and platted by W.D. Buckner and Geo J.C. Donaldson in August 1887 which survey is referred to in the deeds and contracts for lots in said tract heretofore made.

The said tract hereby dedicated embraces the tracts designated on the map of the City of Los Angeles Cal. compiled by Rowan & Koeberle in Nov 1887 by the names "John Meade" and "W. F. Dalton" respectively

Dated Jan. 22, 1889.

George L. Arnold

State of California, Los Angeles County ss

On this 13 day of June 1889 before me George E. Pratt a Notary Public in and for said County, personally appeared George L. Arnold, known to me to be the person whose name is subscribed to the above instrument, and acknowledged to me that he executed the same Witness my hand and official seal

Geo. E. Pratt Notary Public

A full, true and correct copy of the original recorded June 14, 1889, at 5 min past 100. M. at request of Sherman Smith

John W. Francis, County Recorder.

By George B. Bungee Deputy.