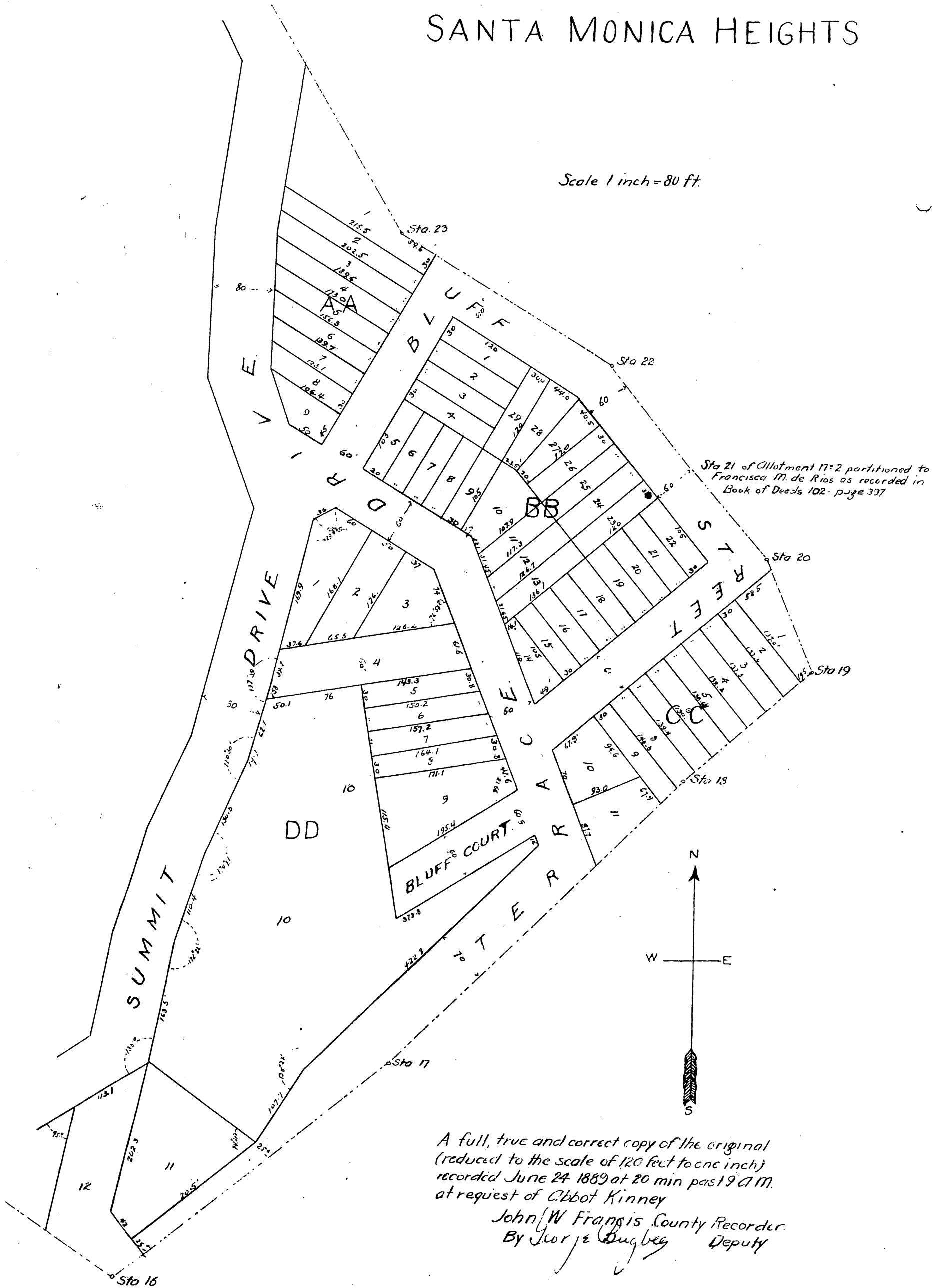


SANTA MONICA HEIGHTS

Scale 1 inch = 80 ft.



Sta 21 of Allotment M-2 partitioned to Francisca M. de Rios as recorded in Book of Deeds 102 - page 397

A full, true and correct copy of the original
 (reduced to the scale of 120 feet to one inch)
 recorded June 24 1889 at 20 min past 9 A.M.
 at request of Abbot Kinney
 John W Francis County Recorder.
 By George Douglas Deputy