

MAP

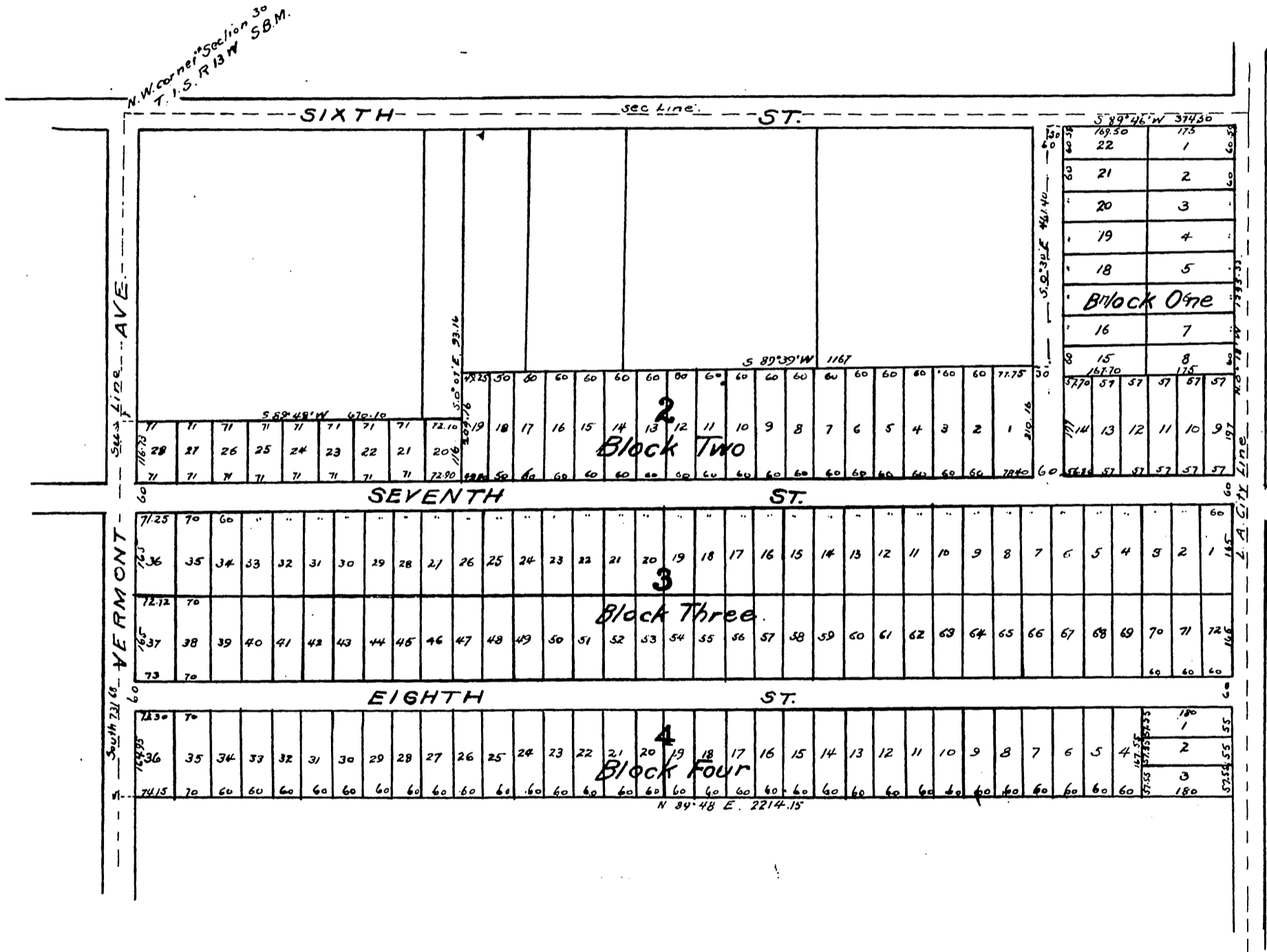
OF THE

Shatto Addition to Los Angeles

Being a sub-division of a portion of the North $\frac{1}{2}$ of the
NW $\frac{1}{4}$ and Lot 1 of Sec. 30, T.1.S.R.13 W. S.B.M.

Surveyed Nov. 1886 by G.E. Pillsbury

Scale 100ft = 1 inch.



A full, true and correct copy of the original,
(reduced to the scale of 250 feet to one inch)
recorded June 24, 1889 at 9 min past 11 A.M.
at request of J.W. Fullmer & Theresa Fair

John W. Francis, County Recorder.
By George Hughes Deputy.