

East Whittier

MAP OF

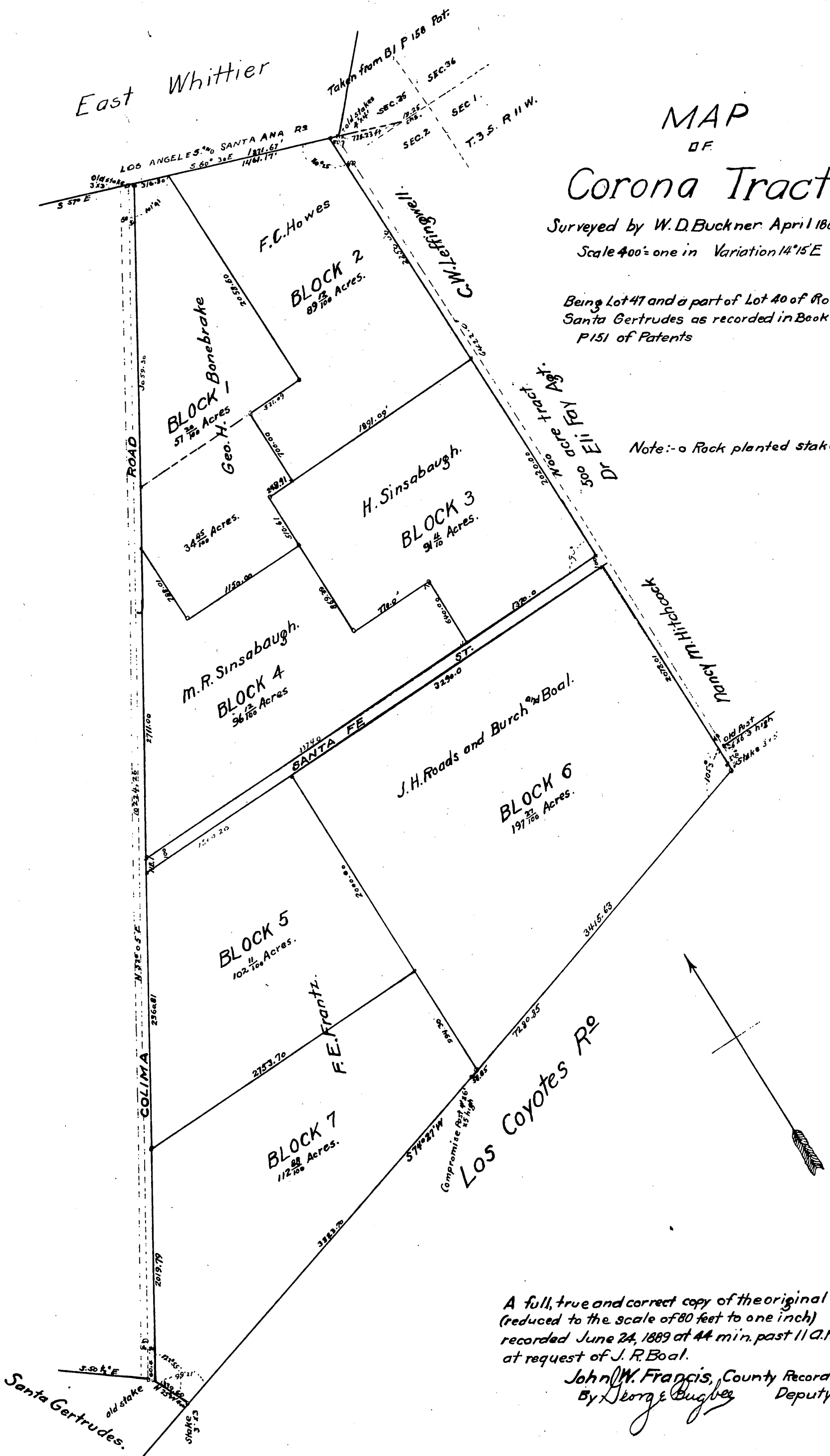
Corona Tract

Surveyed by W.D. Buckner April 1889

Scale 400 = one in Variation 14° 15' E

Being Lot 47 and a part of Lot 40 of R^o
Santa Gertrudes as recorded in Book
P 151 of Patents

Note: -o Rock planted stakes.



A full, true and correct copy of the original
(reduced to the scale of 80 feet to one inch)
recorded June 24, 1889 at 44 min. past 11 A.M.
at request of J. R. Boal.

John W. Francis, County Recorder.
By George Bugbee Deputy.