



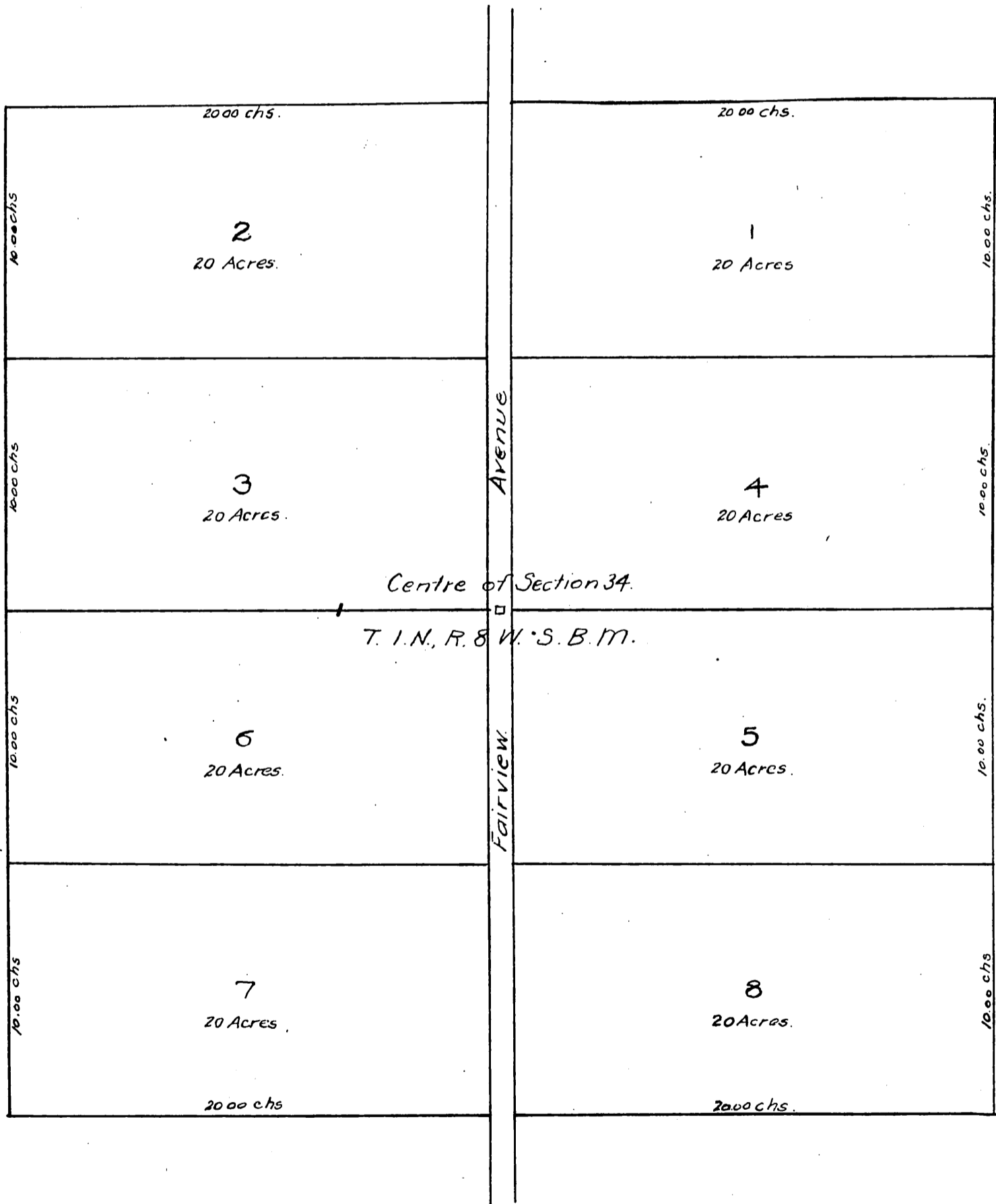
MAP

Dr B.H Fairchilds Subdivision of

Fairview

Los Angeles Co. Cal.

Drawn by Jas. T Taylor & Co June 1889
Scale 3 chs. to 1 in



A full, true and correct copy of the original
(reduced to the scale of 5 chains to one inch)
recorded July 3, 1889 at 2 min past 9 A. M.
at request of Jas. T. Taylor.

John W. Francis, County Recorder
By George Bugby Deputy.