

# MAP

OF

## Woolley's Subdivision

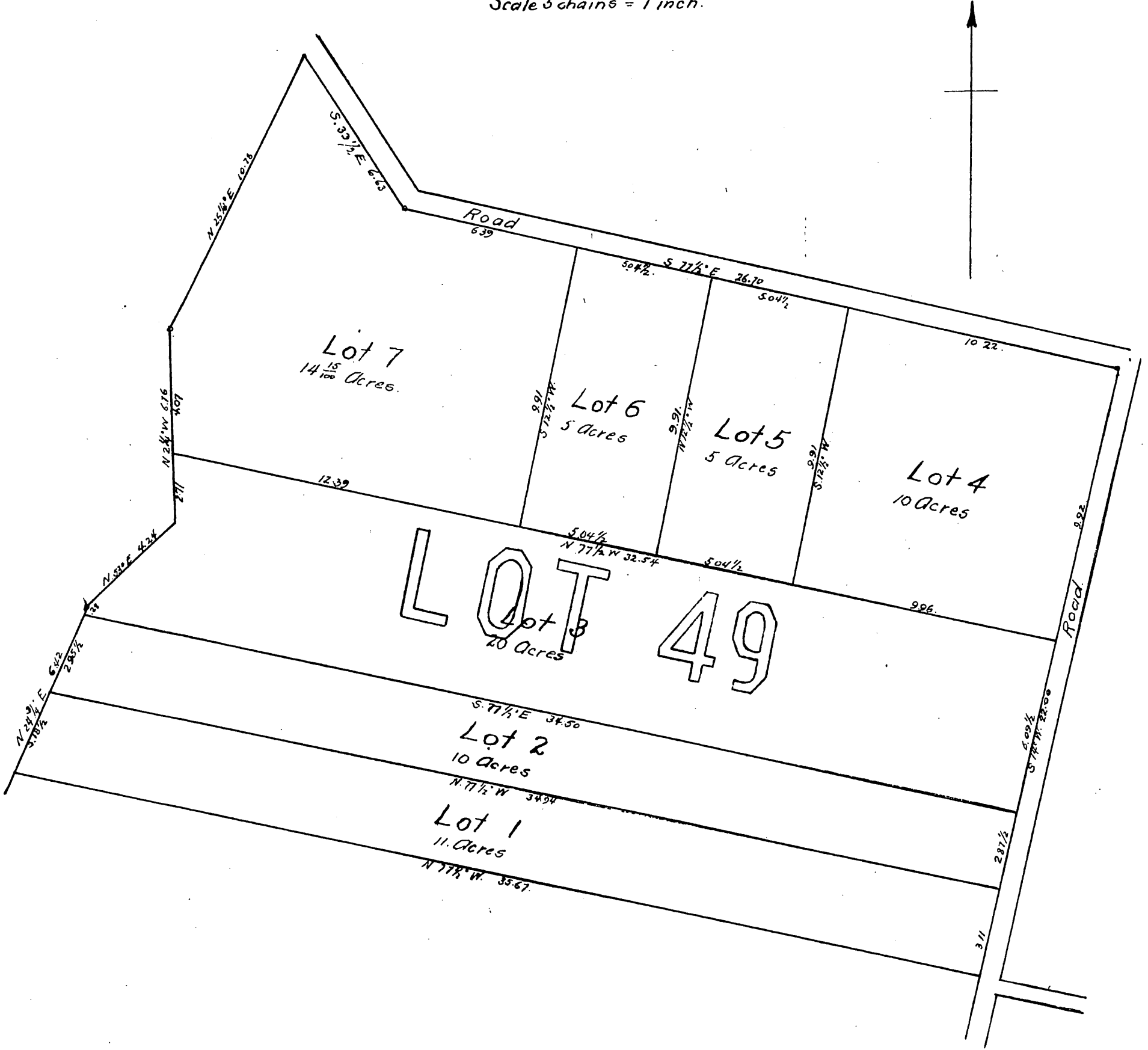
of Lot 49 of the Watt's Subdivision of a part of

San Rafael Rancho

Los Angeles County, Cal.

Surveyed in June 1885 by J. O. Bernal

Scale 5 chains = 1 inch.



A full, true and correct copy of the original recorded July 6, 1889 at 32 min past 11 A.M. at request of P.C. Backus

John W. Francis, County Recorder  
By George Pugh, Deputy.