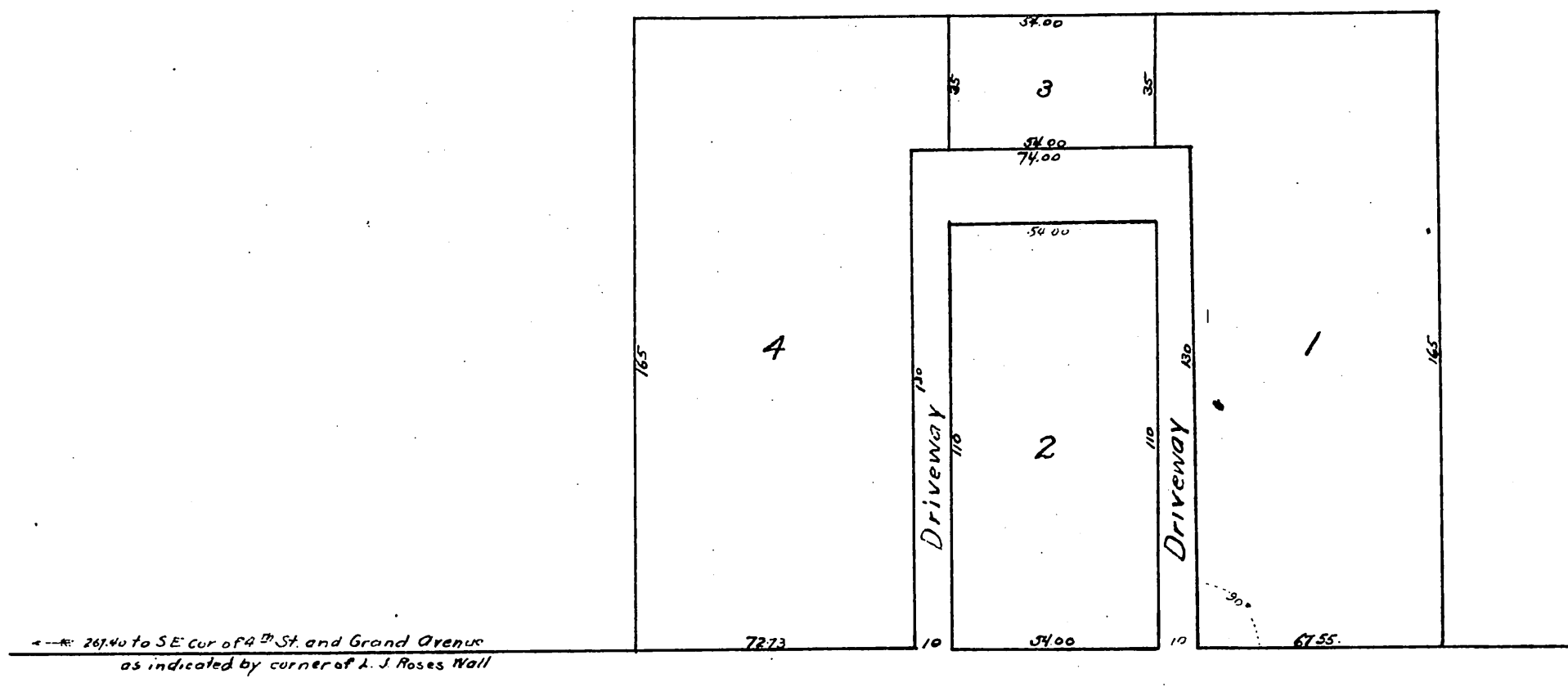


H. W. Mills Subdivision

of Lots 13, 14, 15 and a portion of Lot 16 of Block 107
Bellvue Terrace Tract and a portion of Lot 4, Block 17
of the Mott Tract in the City of Los Angeles California

Surveyed June 1889 by Geo E. Pillsbury
Scale 40 ft to one inch



Grand Ave.

A full, true and correct copy of the original
recorded July 17, 1889 at 25 min past 4 P.M.
at request of H. W. Mills

John R. Francis, County Recorder.
By *George B. Hughes* Deputy.