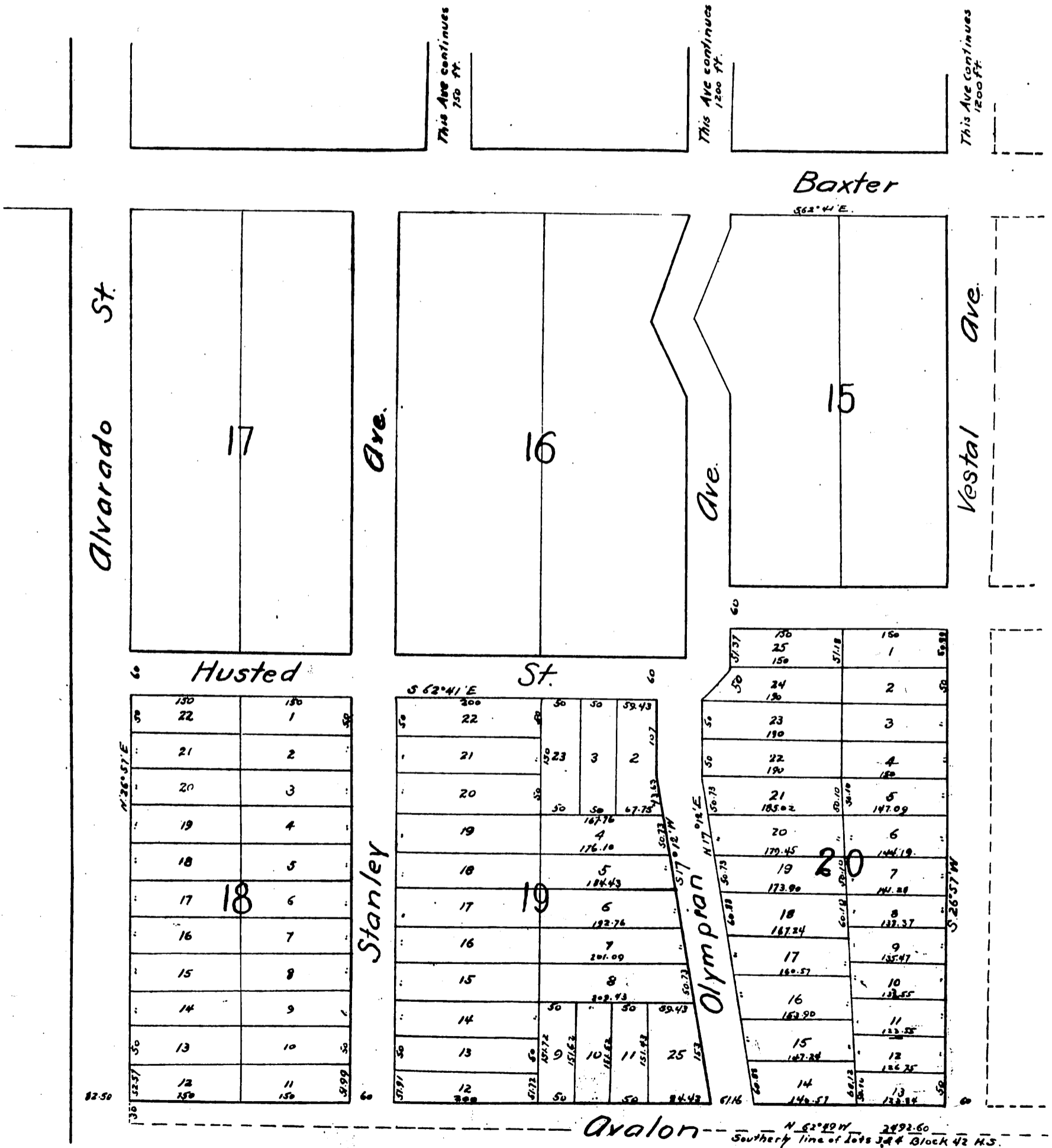
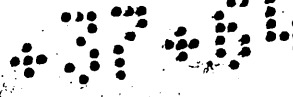


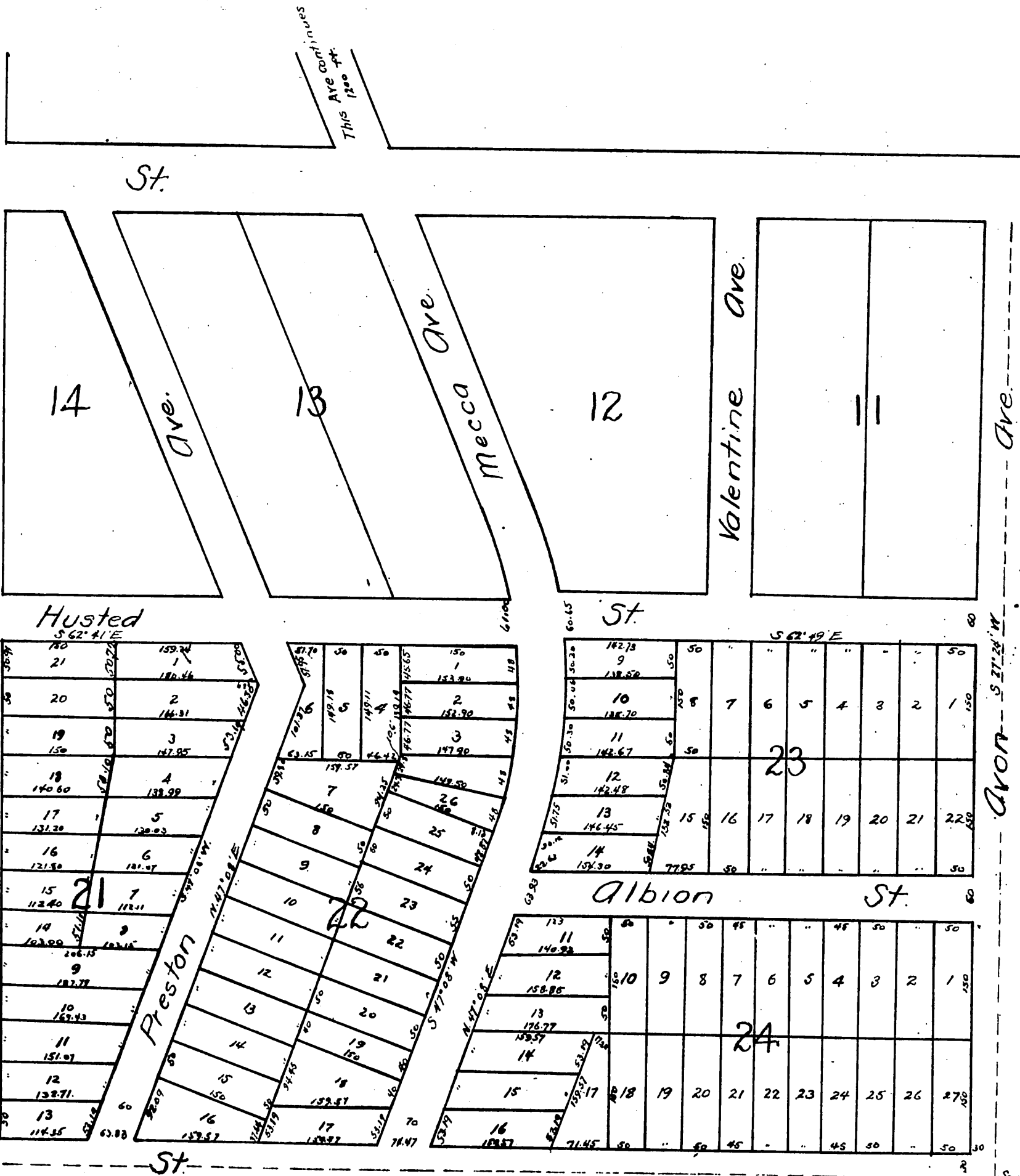


**MAP**  
 of Blocks Nos.  
 11, 12, 13, 14, 15, 16, 17, 18, 19, 20, 21, 22, 23 & 24.  
**ELYSIAN HEIGHTS.**  
 Surveyed Sept 1887 by Pillsbury & Cleveland.  
 Scale 150 ft to 1 inch.





Note: Blocks 11, 12, 13, 14, 15, 16, 17, 18, 19, 20, 21, 22, 23 & 24 Elysian Heights is a subdivision of Lots 3 & 4 of Block 42 Hancock's Survey of City Donation Lots, Los Angeles City, California



A full, true and correct copy of the original  
 recorded July 20, 1889 at 38 min past 12 m.  
 at request of J. S. Maltman  
 John M. Francis, County Recorder  
 By *Roger Bugles* Deputy.

South Easterly cor. of Lot 3 Block 42 H.S.